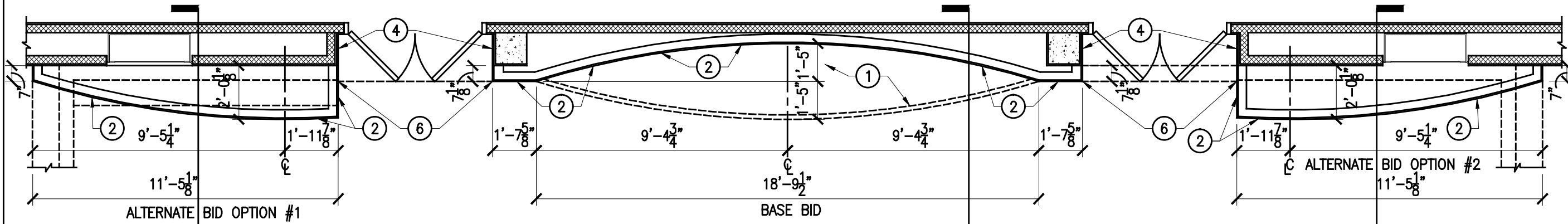


Exhibit Design  
**Wetherill Hall Cemistry Exhibit**  
Design Documents  
1 December 2011

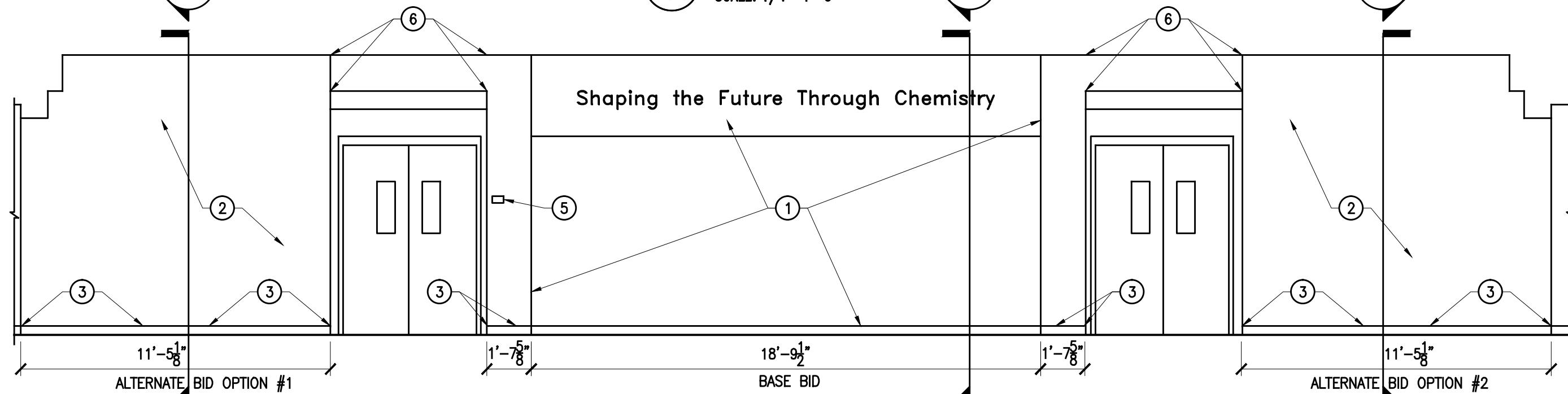


**RLR ASSOCIATES INC**  
1302 North Illinois Street  
Indianapolis IN 46202 USA  
tel 317 632 1300 fax 317 632 1302





1 FLOOR PLAN  
SCALE: 1/4"=1'-0"



2 ELEVATION  
SCALE: 1/4"=1'-0"

**GENERAL NOTES:**

1. ALL DIMENSIONS ARE TO BE FIELD VERIFIED.
2. DO NOT SCALE DRAWINGS.
3. COORDINATE WITH THE ELECTRICAL PLANS FOR LOCATION OF EQUIPMENT & FIXTURES.

**FLOOR PLAN KEY NOTES:**

1. COORDINATE NEW WALL SYSTEM INSTALLATION WITH DISPLAY EXHIBIT MANUFACTURER/INSTALLER.
2. 5/8", TYPE "X", GYPSUM WALL BOARD, ONE SIDE OVER 20 GA METAL STUDS @ 16" O.C. PAINT PER SPEC. SECTION 09912
3. INSTALL NEW 4" RUBBER COVE BASE. COLOR SELECTED BY OWNER.
4. ADHERE GYPSUM WALL BOARD TO EXISTING PLASTER WALL, PROVIDE A "J" BEAD END WHERE THE GYPSUM WALL BOARD ABUTS THE EXISTING PLASTER WALL.
5. REINSTALL ROOM SIGN TAG.
6. ADHERE GYPSUM WALL BOARD TO EXISTING PLASTER WALL.



*Ronald Lee Baker*

the **etica** dno.6  
ARCHITECTURE • ENGINEERING  
BUILDING ENVELOPE CONSULTING  
CONSTRUCTION OBSERV. SERVICES  
www.eticagroup.com

**RLR ASSOCIATES INC**  
Design for Distinguishing Environments

**Applied Engineering Services**  
9100 Keystone Crossing, Suite 200 • Indianapolis, IN 46240  
Tel: (317) 810-4141 • Fax: (317) 810-4140

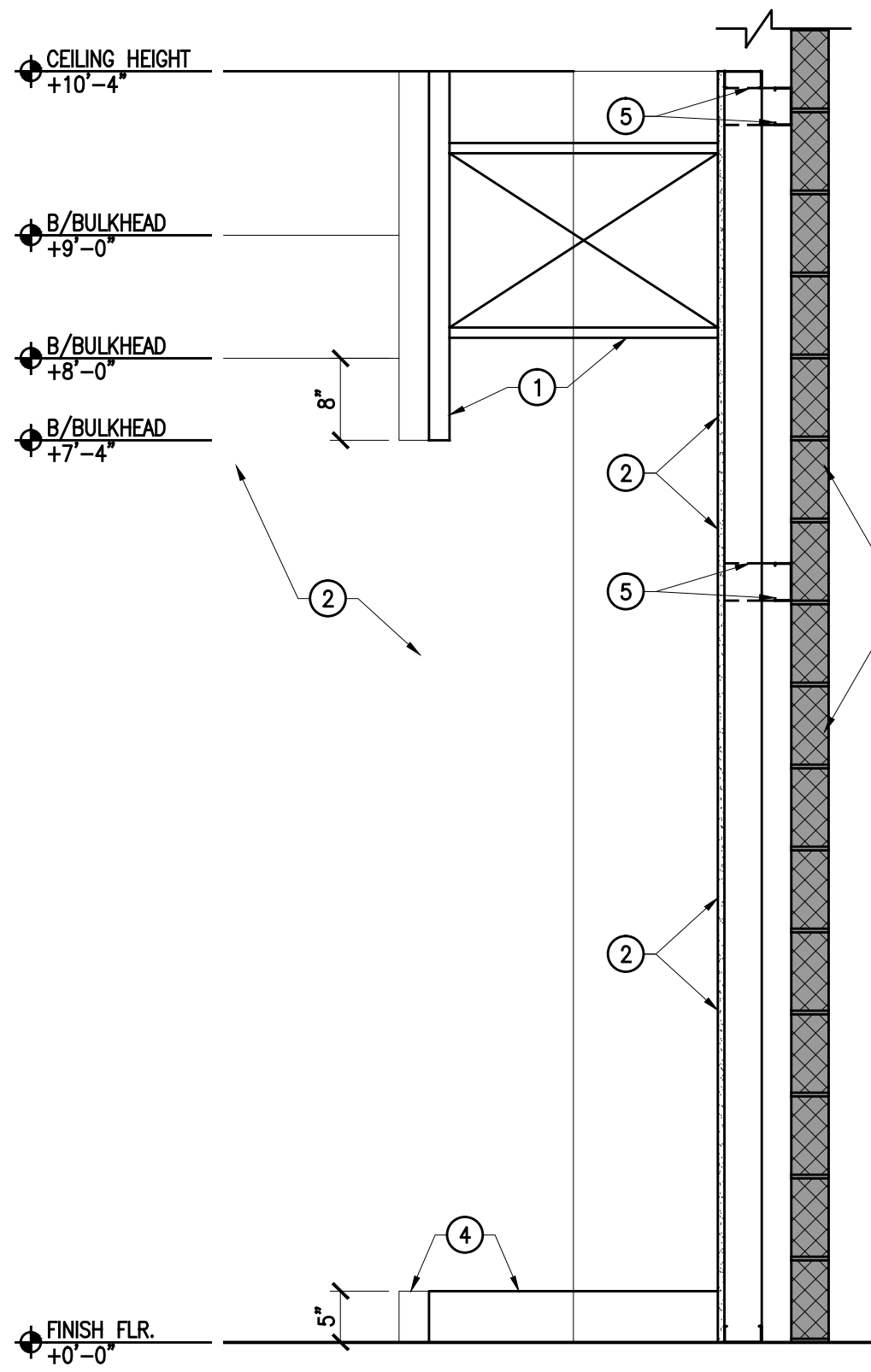
Northern Indiana Office  
407 Broadway St.  
New Haven, Indiana 46774  
Tel: 260.437.4404  
Fax: 317.536.3930

Corporate Office  
7172 N. Keystone Ave., Suite G  
Indianapolis, Indiana 46240  
Tel: 317.466.9520  
Fax: 317.536.3930

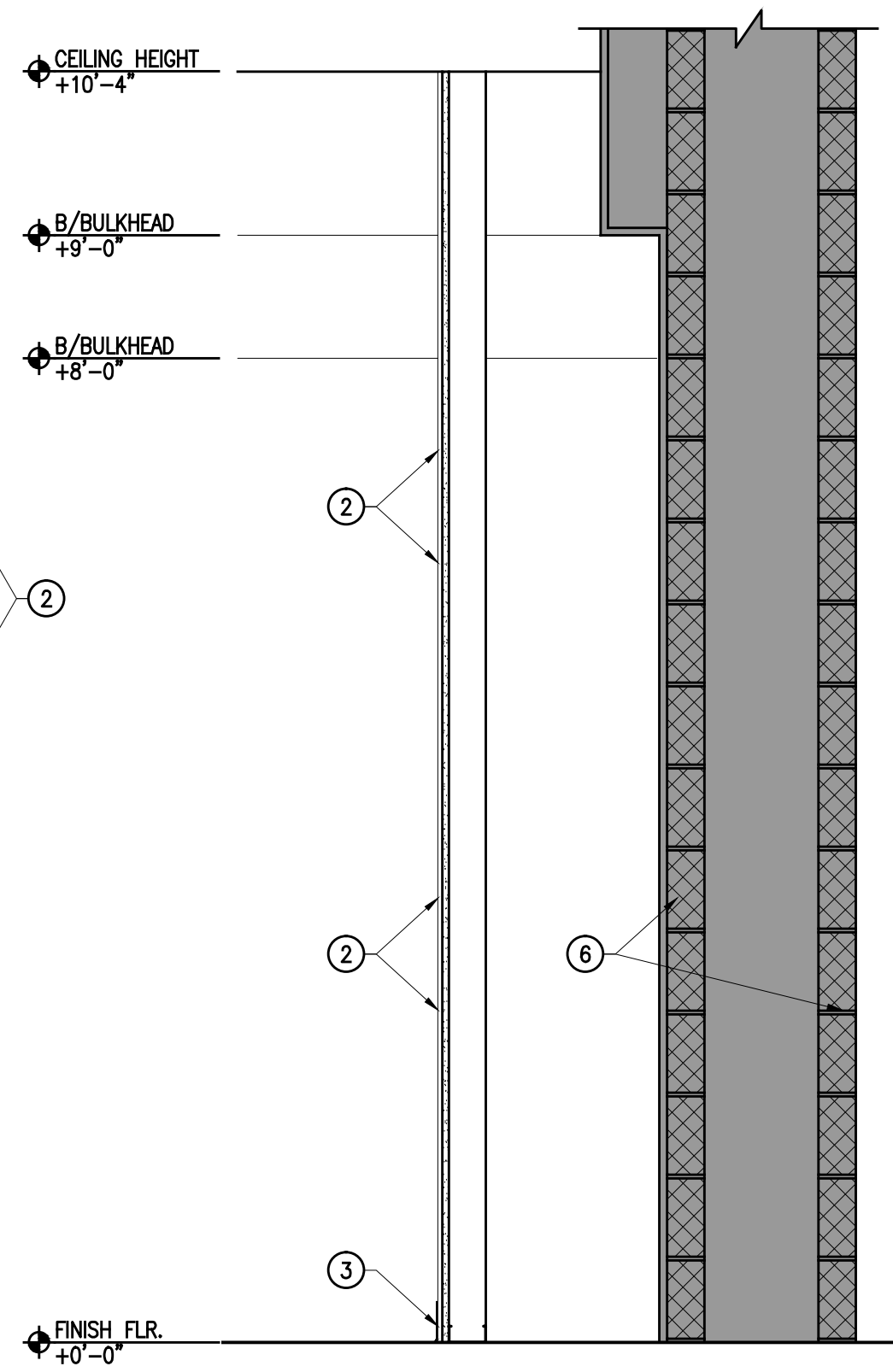
PROJECT TITLE:  
PURDUE UNIVERSITY  
WETHERILL HALL CHEMISTRY EXHIBIT

FREEHAFFER HALL OF ADMINISTRATION SERVICES  
401 S. GRANT STREET  
WEST LAFAYETTE, IN 47907-2024

PROJECT NUMBER: 1119	REVISION DATE:	CHECKED BY: RLB
SHEET NUMBER: A101	DRAWN BY: DJO	DATE ISSUED: 12/01/11



1 WALL SECTION  
A102 SCALE: 3/4"=1'-0"



2 WALL SECTION  
A102 SCALE: 3/4"=1'-0"

### GENERAL NOTES:

1. ALL DIMENSIONS ARE TO BE FIELD VERIFIED.
2. DO NOT SCALE DRAWINGS.
3. COORDINATE WITH THE ELECTRICAL PLANS FOR LOCATION OF EQUIPMENT & FIXTURES.

### 1 KEY NOTES:

1. COORDINATE NEW WALL SYSTEM INSTALLATION WITH DISPLAY EXHIBIT MANUFACTURER/INSTALLER.
2. 5/8", TYPE "X", GYPSUM WALL BOARD, ONE SIDE OVER 20 GA METAL STUDS @ 16" O.C. PAINT PER SPEC. SECTION 09912.
3. INSTALL NEW RUBBER COVE BASE.
4. NEW DISPLAY EXHIBIT BASE BY EXHIBIT MANUFACTURER/INSTALLER.
5. PROVIDE METAL BRACING ANCHORED TO EXISTING WALL @ 16" O.C.
6. SHADED AREA REPRESENTS EXISTING CONDITIONS.



*Ronald Lee Baker*

the **etica** dno.6  
ARCHITECTURE • ENGINEERING  
BUILDING ENVELOPE CONSULTING  
CONSTRUCTION OBSERV. SERVICES  
www.eticagroup.com

Corporate Office  
7172 N. Keystone Ave., Suite G  
Indianapolis, Indiana 46240  
Tel: 317.466.9520  
Fax: 317.536.3930

**RLR ASSOCIATES INC**  
Design for Distinguishing  
Environments

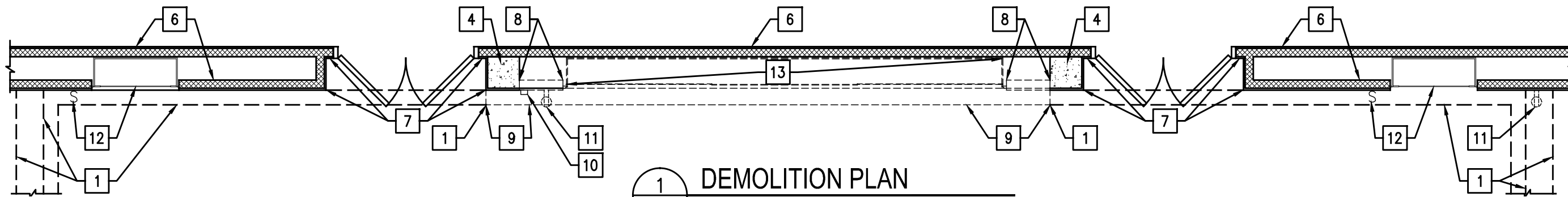
**Applied Engineering Services**  
9100 Keystone Crossing, Suite 200 • Indianapolis, IN 46240  
Tel: (317) 810-4141 • Fax: (317) 810-4140

Northern Indiana Office  
407 Broadway St.  
New Haven, Indiana 46774  
Tel: 260.437.4404  
Fax: 317.536.3930

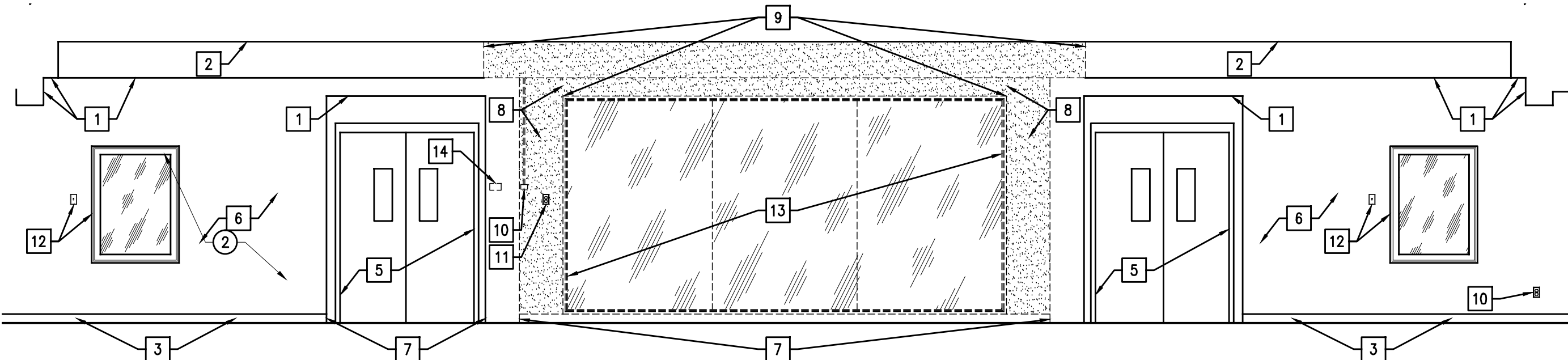
PROJECT TITLE:  
PURDUE UNIVERSITY  
WETHERILL HALL CHEMISTRY EXHIBIT

FREEHAFFER HALL OF ADMINISTRATION SERVICES  
401 S. GRANT STREET  
WEST LAFAYETTE, IN 47907-2024

PROJECT NUMBER: 1119	REVISION DATE: -	CHECKED BY: RLB
SHEET NUMBER: A102	DRAWN BY: DJO	DATE ISSUED: 12/01/11



**1** DEMOLITION PLAN  
AD101 SCALE: 1/4"=1'-0"



**2** DEMOLITION ELEVATION  
AD101 SCALE: 1/4"=1'-0"

**GENERAL NOTES:**

1. DO NOT SCALE DRAWINGS.
2. COORDINATE WITH THE ELECTRICAL PLANS FOR ADDITIONAL SCOPE OF WORK.

**1 KEY NOTES:**

1. EXISTING BULKHEAD.
2. EXISTING CEILING.
3. EXISTING TERRAZZO COVE BASE.
4. EXISTING STRUCTURAL COLUMN.
5. EXISTING WOOD DOOR AND HOLLOW METAL FRAME.
6. EXISTING MASONRY WALL WITH PLASTER FINISH.
7. REMOVE TERRAZZO COVE BASE.
8. REMOVE 4" MASONRY BLOCK WALL WITH PLASTER FINISH COMPLETE.
9. REMOVE BULKHEAD SYSTEM COMPLETE.
10. REMOVE ELECTRICAL OUTLET. SEE ELECTRICAL DRAWINGS.
11. REMOVE ELECTRICAL THERMOSTAT AND CONDUIT. SEE ELECTRICAL DRAWINGS.
12. DISPLAY CASE TO REMAIN. SEE ELECTRICAL DRAWINGS FOR LIGHTING SWITCH DISCONNECT.
13. REMOVE DISPLAY CASE IN ITS ENTIRETY.
14. REMOVE AND SAVE ROOM SIGN TAG FOR REINSTALLATION. SEE SHEET A101.



*Ronald Lee Baker*

the **etica** dno.6  
ARCHITECTURE • ENGINEERING  
BUILDING ENVELOPE CONSULTING  
CONSTRUCTION OBSERV. SERVICES  
www.eticagroup.com

Corporate Office  
7172 N. Keystone Ave., Suite G  
Indianapolis, Indiana 46240  
Tel: 317.466.9520  
Fax: 317.536.3930

Northern Indiana Office  
407 Broadway St.  
New Haven, Indiana 46774  
Tel: 250.437.4404  
Fax: 317.536.3930

**RLR ASSOCIATES INC**  
Design for Distinguishing  
Environments

**Applied Engineering Services**  
9100 Keystone Crossing, Suite 200 • Indianapolis, IN 46240  
Tel: (317) 810-4141 • Fax: (317) 810-4140

PROJECT TITLE:  
PURDUE UNIVERSITY  
WETHERILL HALL CHEMISTRY EXHIBIT

FREEHAFFER HALL OF ADMINISTRATION SERVICES  
401 S. GRANT STREET  
WEST LAFAYETTE, IN 47907-2024

SHEET NUMBER: <b>AD101</b>	PROJECT NUMBER: 1119	REVISION DATE:	CHECKED BY: RLB
DATE ISSUED: 12/01/11	DRAWN BY: DJO		

NOTE: ALL SYMBOL DESCRIPTIONS ARE SUBJECT TO MODIFICATION ON THE DRAWINGS.  
ALL SYMBOLS NOT NECESSARILY USED ON THIS PROJECT.

RACEWAY SYMBOLS:

- CONDUIT CONCEALED IN WALL OR IN CEILING.
- — — CONDUIT CONCEALED UNDER FLOOR OR BELOW GRADE.
- CONDUIT EXPOSED.
- ⌊ — — — UNDERGROUND CONDUIT STUBBED OUT 5'-0" FROM BUILDING OR WALKWAY LINE, CAPPED AND MARKED.
- ← ——— HOME RUN TO PANEL "B" FOR CIRCUITS #5 & 7 WITH COMMON NEUTRAL AND GROUND.
- SK ——— EXISTING SKELETAL, CONDUIT.
- ⊙ JUNCTION BOX, FLUSH WALL MOUNTED. CONNECTION TO EQUIPMENT AS INDICATED.
- ⊙ JUNCTION BOX CONCEALED ABOVE ACCESSIBLE CEILING AREA.

RECEPTACLE SYMBOLS:

- ⊕ 20 AMP DUPLEX GROUNDING RECEPTACLE +20" AFF UNLESS OTHERWISE NOTED.
- ⊕ RECEPTACLE OUTLET WITHIN AN ENCLOSURE. SEE DRAWING FOR TYPE

LIGHTING CONTROL SYMBOLS:

- ⊕ 20 AMP POLE TOGGLE SWITCH 48" AFF. INSTALL MULTIPLE SWITCHES UNDER COMMON COVER PLATE. SUBSCRIPT AT SWITCH SYMBOL INDICATES THE FOLLOWING:  
 TOP: 2 - DOUBLE POLE    P - PILOT LIGHT    D - DIMMER  
       3 - THREE WAY        M - MOMENTARY    T - TIMER  
       4 - FOUR WAY        K - KEY OPERATED    BLANK - SINGLE POLE  
 BOTTOM: a,b,c,d, ETC. - IDENTIFICATION OF CONTROLLED DEVICE.
- ⊕ OCCUPANCY SENSOR SWITCH, CEILING MOUNTED.
- ⊕ OCCUPANCY SENSOR SWITCH, WALL MOUNTED.

POWER/MOTOR CONTROL SYMBOLS:

- ▬ PANELBOARD OR EQUIPMENT CABINET AS INDICATED.

MECHANICAL

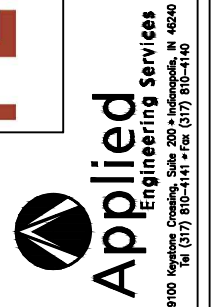
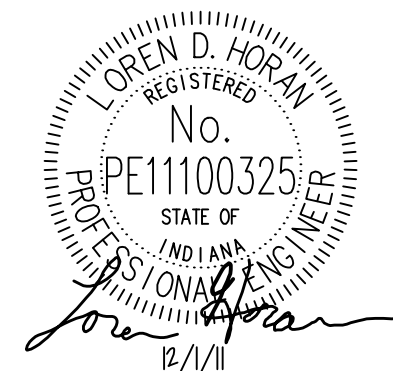
- ⊕ THERMOSTAT

GENERAL SYMBOLS:

- NEW
- EXISTING
- DEMOLITION
- . - . - . FUTURE
- ① PLAN NOTE
- 1 DEMOLITION NOTE
- ⊗ DETAIL OR SECTION MARKER

ELECTRICAL ABBREVIATIONS:

- 3P 3 POLE
- A, AMP AMPERE
- AFF ABOVE FINISHED FLOOR. MOUNTING HEIGHTS FROM FINISHED FLOOR TO TOP OF BOX.
- GFCI GROUND FAULT CIRCUIT INTERRUPTER
- GND GROUND
- KVA KILOVOLT AMPERES
- KW KILOWATT
- PROVIDE FURNISH, INSTALL AND CONNECT.
- V VOLTS
- WP WEATHERPROOF



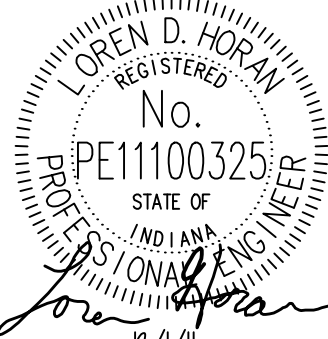
the **etlica** dnoib  
 ARCHITECTURE • ENGINEERING  
 BUILDING ENVELOPE CONSULTING  
 CONSTRUCTION OBSERV. SERVICES  
 www.etlicagroup.com  
 Northern Indiana Office  
 407 Broadway St.  
 New Haven, Indiana 46774  
 Tel: 260.437.4404  
 Fax: 317.536.3930  
 Corporate Office  
 7172 N. Keystone Ave., Suite G  
 Indianapolis, Indiana 46240  
 Tel: 317.466.9520  
 Fax: 317.536.3930

PROJECT TITLE:  
 PURDUE UNIVERSITY  
 WETHERILL HALL CHEMISTRY EXHIBIT  
 FREEHAFFER HALL OF ADMINISTRATION SERVICES  
 401 S. GRANT STREET  
 WEST LAFAYETTE, IN 47907-2024

PROJECT NUMBER: 1119	REVISION DATE:	CHECKED BY: NIRN
SHEET NUMBER: <b>E000</b>	DRAWN BY: NIRN	DATE ISSUED: 12.1.2011

**GENERAL ELECTRICAL NOTES:**

1. ALL WORK SHOWN IS EXISTING. NEW WORK IDENTIFIED SHALL BE BY THE ELECTRICAL TRADES, UNLESS OTHERWISE NOTED.
2. ALL WORK SHALL BE IN ACCORDANCE WITH THE LATEST EDITION OF THE NATIONAL ELECTRICAL CODE (NFPA 70).
3. THIS CONTRACTOR SHALL REVIEW THE COMPLETE SET OF DRAWINGS AND SPECIFICATIONS AND INCLUDE WORK FROM OTHER DIVISIONS THAT AFFECT HIS WORK IN HIS BID.
4. CONTRACTOR SHALL VISIT PROJECT SITE, PRIOR TO BIDDING, TO REVIEW EXISTING ELECTRICAL, SECURITY, AND FIRE ALARM CONDITIONS. NOT ALL EXISTING ELECTRICAL EQUIPMENT, WIRING DEVICES AND RACEWAYS ARE SHOWN.
5. EACH CONTRACTOR SHALL FIELD VERIFY ALL EXISTING APPLICABLE CONDITIONS AND DIMENSIONS SHOWN ON THE DRAWINGS, AS PERTAINS TO THE INTENT OF THESE DRAWINGS. CONTRACTOR SHALL BRING TO THE ATTENTION OF THE ARCHITECT AND DESIGNER ANY DISCREPANCIES DISCOVERED PRIOR TO THE COMMENCEMENT OF ANY WORK AFFECTED BY OR RELATED TO SUCH DISCREPANCY. EACH CONTRACTOR SHALL BE RESPONSIBLE FOR ALL COSTS ASSOCIATED WITH OR CAUSED BY THAT CONTRACTOR'S FAILURE TO COMPLY WITH THIS REQUIREMENT.
6. COORDINATE ALL WORK WITH OWNER, SO AS TO NOT CAUSE DISRUPTION OF PURDUE STAFF.
7. ALL LOUD NOISE MUST BE LIMITED TO BETWEEN 6 AND 8 AM AND DURING CLASS BREAKS.
8. WORK IN OFFICES, LABS, CLASSROOMS, AND LIBRARIES WILL REQUIRE THE PROTECTION (COVERING) OF FURNISHINGS AND ELECTRICAL/ELECTRONIC EQUIPMENT. DO NOT USE PLASTIC TO COVER COMPUTERS AND ELECTRONIC EQUIPMENT AT ANY TIME. CLOTH COVERS ARE ACCEPTABLE.
9. POWER, SECURITY, AND FIRE ALARM INTERRUPTIONS MUST BE PROPERLY PURSUED TO REDUCE INCONVENIENCE TO THE NORMAL BUILDING ACTIVITY TO A MINIMUM. ARRANGEMENTS FOR INTERRUPTION OF ELECTRICAL SERVICE TO UNIVERSITY AREAS MUST BE MADE IN WRITING WITH THE SUPERINTENDENT AND PROJECT MANAGER AT LEAST ONE WEEK BEFORE THE PROPOSED INTERRUPTIONS.
10. INTERRUPTIONS OF SERVICE IN AREAS WHERE UNIVERSITY PERSONNEL ARE WORKING WILL BE MADE BETWEEN THE HOURS OF 11:00 P.M. AND 6:00 A.M. UNLESS APPROVED BY SUPERINTENDENT, OWNER'S SECURITY PERSONNEL, AND OWNER'S FIRE ALARM PERSONNEL.
11. DEMOLITION SHALL BE PERFORMED TO MINIMIZE DAMAGE TO ADJACENT RETAINED WORK. WHERE SUCH DAMAGE OCCURS, PATCH, REPAIR OR OTHERWISE RESTORE TO ITS ORIGINAL CONDITION.
12. WHERE DEMOLITION WORK LEAVES HOLES AND DAMAGED SURFACE THAT WILL BE EXPOSED IN FINISHED WORK OR THROUGH A FIRE SEPARATION, THESE HOLES AND DAMAGED SURFACES SHALL BE PATCHED AND REPAIRED TO MATCH ADJACENT FINISHED SURFACE.
13. CONTRACTOR SHALL INCLUDE IN HIS BID THE REMOVAL AND PROPER DISPOSAL OF ALL EXISTING ELECTRICAL EQUIPMENT INDICATED TO BE REMOVED. HOWEVER, THE OWNER HAS THE FIRST RIGHT TO REFUSAL OF ALL EXISTING ELECTRICAL EQUIPMENT.
14. FOR ALL REMOVED OUTLETS, EQUIPMENT, SECURITY, AND FIRE ALARM, REMOVE ALL EXISTING RACEWAY AND WIRING TO SOURCE OR FIRST ACTIVE TO REMAIN JUNCTION BOX.
15. MAINTAIN SERVICE CONTINUITY TO ALL EXISTING LOADS THAT ARE TO REMAIN BY MODIFYING AND/OR EXTENDING CONDUIT AND WIRING AS REQUIRED. FIELD VERIFICATION OF EXISTING CONDUIT RUNS AND CIRCUITRY IS TO BE DONE AS REQUIRED. THIS INCLUDES, BUT IS NOT LIMITED TO RECEPTACLES, OVERHEAD POWER DROPS, DISCONNECTS, LIGHTING, AND WIRING TO FUME HOODS AND MECHANICAL EQUIPMENT.
16. UNLESS OTHERWISE NOTED ON THE DRAWINGS, ALL CUTTING AND PATCHING REQUIRED FOR THE ELECTRICAL, SECURITY, AND FIRE ALARM INSTALLATION SHALL BE PERFORMED BY THE APPROPRIATE TRADE AND PAID FOR BY THIS CONTRACTOR. ALL CUTTING AND PATCHING SHALL BE IN ACCORDANCE WITH THE APPLICABLE ARCHITECTURAL DETAILS/NOTES.
17. RELOCATED/REINSTALLED ITEMS SHALL BE CLEANED AND PLACED IN STORAGE UNTIL ITEMS ARE READY TO BE REINSTALLED. IF ITEM IS DAMAGED, IT SHALL BE REPAIRED OR REPLACED WITH NEW ITEM AS APPROVED.
18. ALL FIRESTOPPING SHALL BE PROVIDED UNDER DIVISION 07, "FIRESTOPPING".
19. VERIFY EXACT LOCATION OF OUTLETS ABOVE COUNTERS, IN CASEWORK OR EQUIPMENT PRIOR TO ROUGH IN.
20. COORDINATE INSTALLATION OF DEVICES AND WIRING WITH LIGHTING, HVAC, PIPING, AND STRUCTURAL MEMBERS.
21. CONTRACTOR SHALL PROVIDE MINIMUM 200 LB TENSION PULL STRING IN ALL EMPTY/FUTURE USE RACEWAYS.
22. ALL CONDUIT ROUTED IN AND THROUGH CONCRETE AND/OR BUILDING STRUCTURAL WALLS SHALL BE RIGID METAL CONDUIT, UNLESS OTHERWISE NOTED.
23. SURFACE RACEWAY USED SHALL BE PAINTED TO MATCH THE WALLS.
24. WHEN NEW WALL AND FLOOR FINISHES ARE SHOWN, REMOVE ALL COVERPLATES AND REINSTALL AFTER NEW FINISHES HAVE BEEN COMPLETED.
25. ALL CONDUIT AND DEVICES SHALL BE PROVIDED WITH PURDUE APPROVED HANGERS CONFORMING TO STANDARDS OUTLINED. IN GENERAL ALL HANGERS SHALL BE ANCHORED FROM THE SIDE OF THE STRUCTURE AND NOT FROM THE BOTTOM.
26. RETURN ALL DUMMY FUSES TO OWNER. PROVIDE DUMMY FUSES IN ALL EXISTING PANELS AS NEEDED.
27. TURN OVER ALL KEYS TO OWNER AT COMPLETION OF PROJECT.
28. FIRE STOP ALL WALL AND FLOOR PENETRATIONS WHETHER SURFACE IS RATED OR NOT.
29. DEVICE LOCATIONS AND RACEWAY ROUTING SHOWN IS DIAGRAMMATIC. CONTRACTOR SHALL VERIFY ALL CONDITIONS PRIOR TO STARTING CONSTRUCTION.

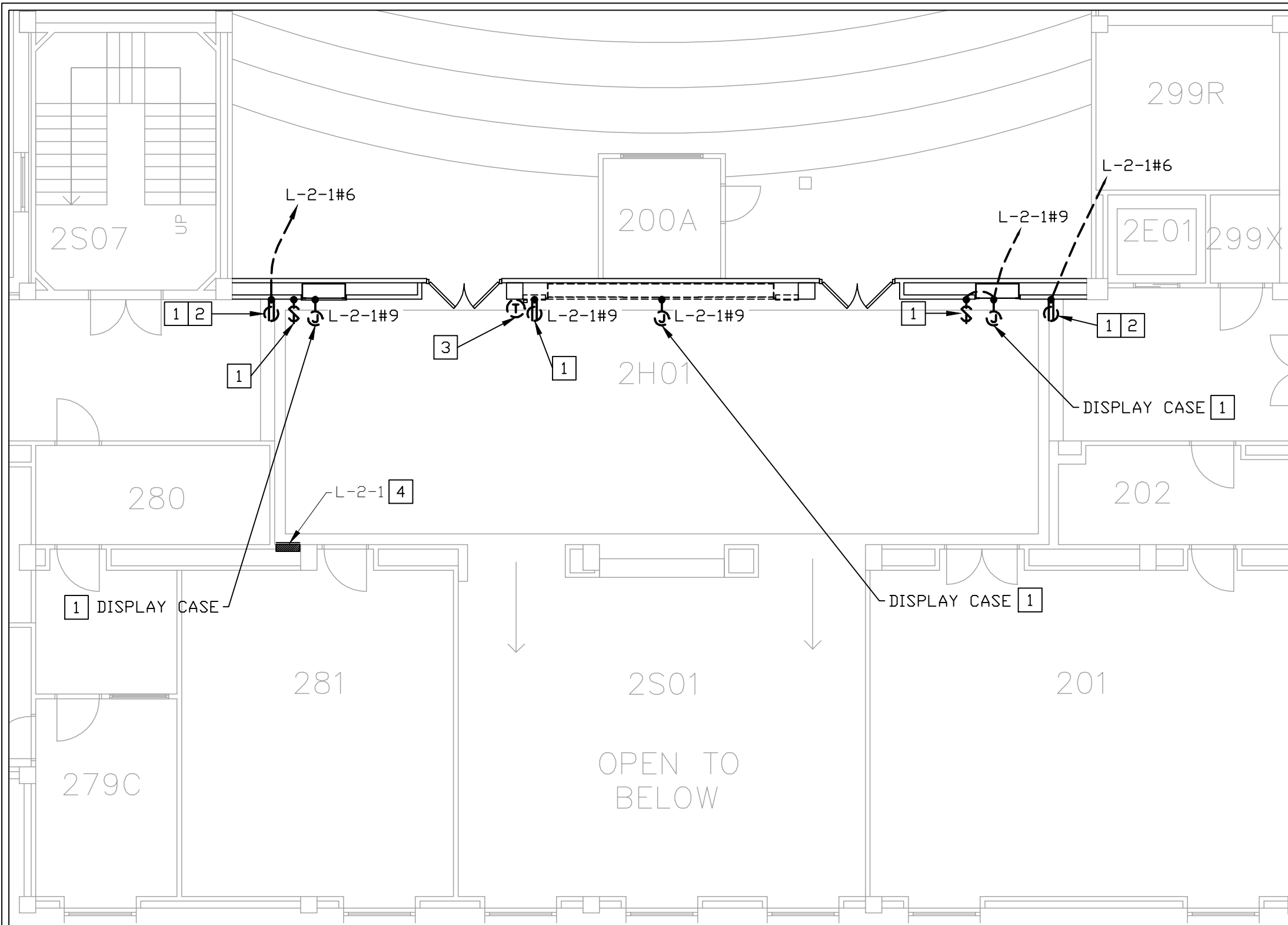
  
 LOREN D. HORAN  
 REGISTERED  
 No. PE11100325  
 STATE OF INDIANA  
 PROFESSIONAL ENGINEER  
*Loren D. Horan*  
 12/1/11

<p><b>PROJECT NUMBER:</b> 1119</p>	<p><b>REVISION DATE:</b></p>	<p><b>CHECKED BY:</b> NIRN</p>	<p><b>PROJECT TITLE:</b> PURDUE UNIVERSITY WETHERILL HALL CHEMISTRY EXHIBIT</p>
<p><b>SHEET NUMBER:</b> E001</p>	<p><b>DATE ISSUED:</b> 12.1.2011</p>		<p><b>FREEHAFFER HALL OF ADMINISTRATION SERVICES</b> 401 S. GRANT STREET WEST LAFAYETTE, IN 47907-2024</p>


**Applied Engineering Services**  
 9100 Keystone Crossing, Suite 200 • Indianapolis, IN 46240  
 Tel: (317) 810-1141 • Fax: (317) 810-4140


**RLR ASSOCIATES INC**  
 Design for Distinguishing Environments


**the etica group**  
 ARCHITECTURE • ENGINEERING  
 BUILDING ENVELOPE CONSULTING  
 CONSTRUCTION OBSERV. SERVICES  
 www.eticagroup.com  
 Northern Indiana Office  
 407 Broadway St.  
 New Haven, Indiana 46774  
 Tel: 260.437.4404  
 Fax: 317.536.3930



**GENERAL NOTES:**

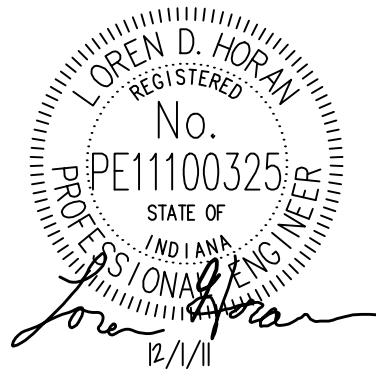
1. SEE DRAWING E001 FOR ADDITIONAL GENERAL NOTES.
2. ALL DEVICES SHOWN ARE EXISTING TO REMAIN AND SHALL BE PROTECTED THROUGHOUT CONSTRUCTION UNLESS OTHERWISE NOTED.
3. CONTRACTOR SHALL REPAIR AND PATCH ALL SURFACES FROM REMOVED RACEWAY AND DEVICES.
4. SEE DRAWING T101 FOR EXISTING TELECOM INFRASTRUCTURE LOCATIONS. CONTRACTOR SHALL PROTECT EXISTING TELECOM SYSTEM THROUGHOUT CONSTRUCTION.
5. EXISTING CIRCUITS ARE BASED ON PREVIOUS INFORMATION, PANEL SCHEDULES, AND FIELD CONDITIONS. CONTRACTOR SHALL FIELD VERIFY CIRCUITS PRIOR TO DEMOLITION.

**DEMOLITION NOTES:**

- 1 REMOVE EXISTING ELECTRICAL DEVICE, RACEWAY, WIRE, SUPPORT FRAMING, HANGERS, FLOOR BOLTS, ETC. BACK TO SOURCE. AT SOURCE TURN BREAKER/FUSE OFF AND LABEL AS SPARE.
- 2 SEE PLAN NOTE #4 ON DRAWING E101 FOR NEW DEVICE. UTILIZE EXISTING CIRCUIT.
- 3 REMOVE EXISTING THERMOSTAT FROM WALL. SEE DRAWING E101 FOR NEW INSTALLATION LOCATION. RETAIN ASSOCIATED PNEUMATIC/DDC WIRING AS REQUIRED FOR RELOCATION.
- 4 EXISTING DEVICE SHALL REMAIN. PROTECT DURING CONSTRUCTION.

**ELECTRICAL DEMOLITION PLAN**

SCALE: 1/8" = 1'-0"



PROJECT NUMBER: 1119	REVISION DATE:	CHECKED BY: NIRN
SHEET NUMBER: <b>E100</b>	DATE ISSUED: 12.1.2011	DRAWN BY: NIRN

**Applied Engineering Services**  
9100 Keystone Crossing, Suite 200 • Indianapolis, IN 46240  
Tel: (317) 810-1141 • Fax: (317) 810-4140

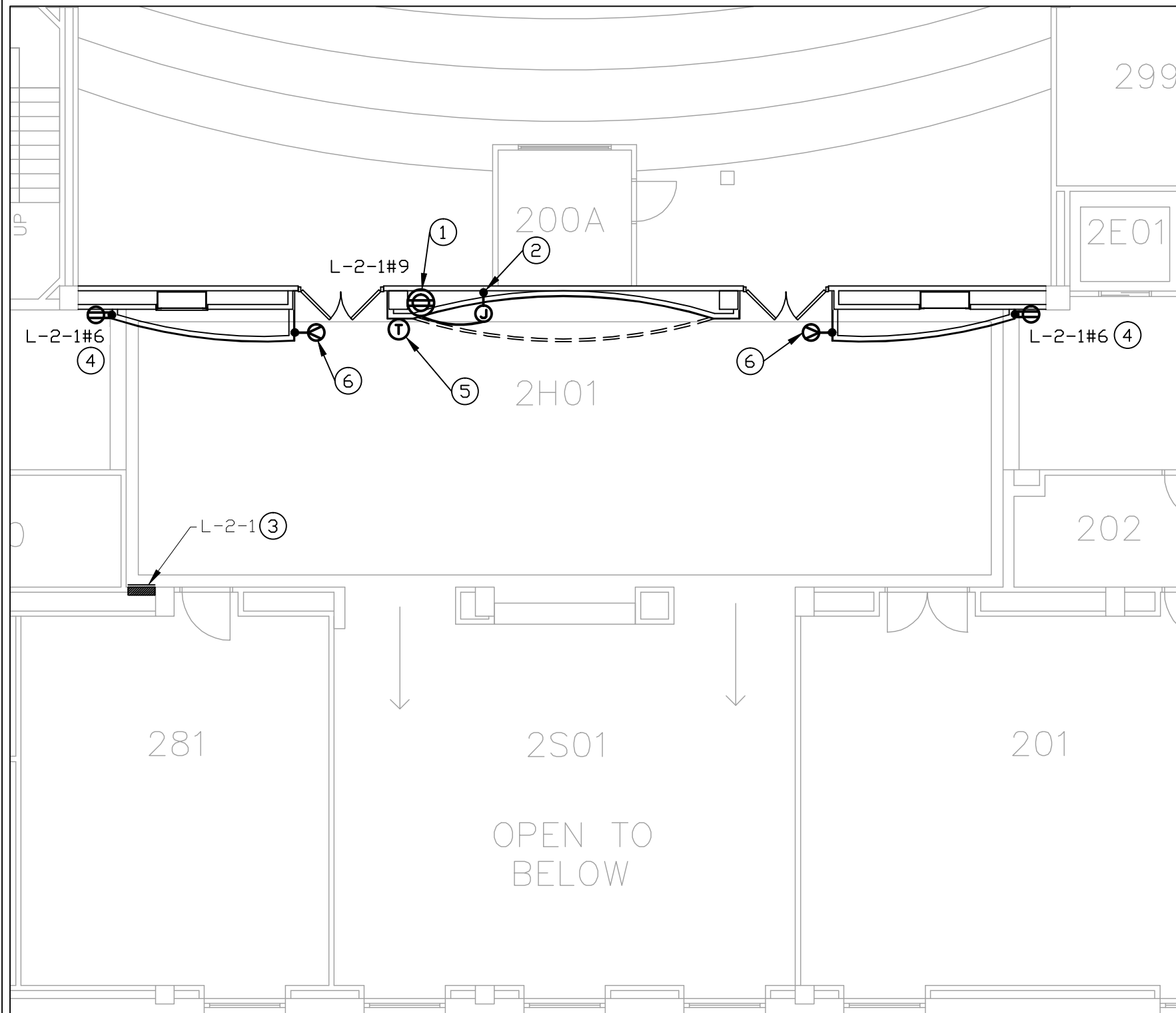
**RLR ASSOCIATES INC**  
Design for Distinguishing Environments

**the etica group**  
ARCHITECTURE • ENGINEERING  
BUILDING ENVELOPE CONSULTING  
CONSTRUCTION OBSERV. SERVICES  
www.eticagroup.com

Northern Indiana Office  
407 Broadway St.  
New Haven, Indiana 46774  
Tel: 260.437.4404  
Fax: 317.536.3930

PROJECT TITLE:  
PURDUE UNIVERSITY  
WETHERILL HALL CHEMISTRY EXHIBIT

FREEHAFFER HALL OF ADMINISTRATION SERVICES  
401 S. GRANT STREET  
WEST LAFAYETTE, IN 47907-2024



**GENERAL NOTES:**

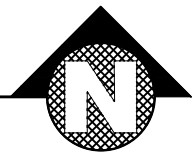
- 299
1. SEE DRAWING E001 FOR ADDITIONAL GENERAL NOTES.
  2. ALL POWER CIRCUITS SHALL CONSIST OF 3/4"C, 2#12 AND #12 GND UNLESS OTHERWISE NOTED.
  3. CONTRACTOR SHALL CUT-IN RACEWAY AND PATCH PLASTER AS REQUIRED TO ROUTE RACEWAY BETWEEN PANEL AND DISPLAY CASE.
  4. SEE DRAWING T101 FOR EXISTING TELECOM INFRASTRUCTURE LOCATIONS. CONTRACTOR SHALL PROTECT EXISTING TELECOM SYSTEM THROUGHOUT CONSTRUCTION.

**PLAN NOTES:**

- ① PROVIDE ENCLOSURE FOR DISPLAY CASE POWER. ENCLOSURE SHALL BE 8"X8"X4" WITH A SURFACE MOUNTED QUAD RECEPTACLE INSIDE. ENCLOSURE SHALL HAVE A TWIST CLASP AND KNOCK-OUTS FOR PLUG-IN CONNECTIONS. ENCLOSURE SHALL BE INSTALLED NEAR THE BOTTOM LOWER LEFT AREA OF THE DISPLAY BEHIND AN ACCESS PANEL. COORDINATE EXACT LOCATION AND INSTALLATION HEIGHT WITH DISPLAY VENDOR PRIOR TO ROUGH-IN.
- ② PROVIDE JUNCTION BOX FOR DISPLAY CASE LIGHTING. JUNCTION BOX SHALL BE INSTALLED NEAR THE TOP OF THE DISPLAY. COORDINATE EXACT LOCATION AND INSTALLATION HEIGHT WITH DISPLAY VENDOR PRIOR TO ROUGH-IN.
- ③ CONTRACTOR SHALL UTILIZE SPARE CIRCUIT WITHIN PANEL FROM REMOVED DISPLAY CASES. CONTRACTOR SHALL PROVIDE IN HIS BID THE COST OF ONE (1) 1P-20A BREAKER/FUSE FOR NEW DISPLAY CASE LOAD.
- ④ PROVIDE NEW DEVICE. UTILIZE EXISTING CIRCUIT FROM REMOVED RECEPTACLE FOR NEW DEVICE. EXTEND AND RECONNECT CIRCUIT AS REQUIRED. SEE DEMOLITION NOTE #2 ON DRAWING E100 FOR ADDITIONAL INFORMATION.
- ⑤ REINSTALL EXISTING THERMOSTAT. DEVICE SHALL BE FLUSH MOUNTED. EXTEND CONTROLS, PNEUMATIC/DDC WIRING AND RACEWAY AS REQUIRED.
- ⑥ PROVIDE 120V, MULTI-WAY, DUAL TECHNOLOGY, SENSOR SWITCH, SIMILAR TO WATTSTOPPER #DW-103 OR EQUAL. CONFIRM DEVICE COLOR WITH ARCHITECT PRIOR TO PURCHASE. SENSOR SHALL BE CONFIGURED TO AUTOMATICALLY TURN ON/OFF THE DISPLAY LIGHTS. INSTALL DEVICE SUCH THAT IT IS NOT IN CONFLICT WITH THE DOOR SWING OR DOOR HANDLE. COORDINATE INSTALLATION LOCATION WITH ARCHITECT PRIOR TO ROUGH-IN.

**ELECTRICAL PLAN**

SCALE: 1/8" = 1'-0"



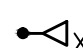

		Northern Indiana Office 407 Broadway St. New Haven, Indiana 46774 Tel: 260.437.4404 Fax: 317.536.3930	
		Corporate Office 7172 N. Keystone Ave., Suite G Indianapolis, Indiana 46240 Tel: 317.466.9520 Fax: 317.536.3930	
		Applied Engineering Services 9100 Keystone Crossing, Suite 200 • Indianapolis, IN 46240 Tel: (317) 810-1141 • Fax: (317) 810-4140	
PROJECT TITLE: PURDUE UNIVERSITY WETHERILL HALL CHEMISTRY EXHIBIT FREEHAFFER HALL OF ADMINISTRATION SERVICES 401 S. GRANT STREET WEST LAFAYETTE, IN 47907-2024			
PROJECT NUMBER:	1119	REVISION DATE:	
CHECKED BY:		DRAWN BY:	NRN
DATE ISSUED:	12.1.2011	SHEET NUMBER:	E101

NOTE: ALL SYMBOL DESCRIPTIONS ARE SUBJECT TO MODIFICATION ON THE DRAWINGS.  
ALL SYMBOLS NOT NECESSARILY USED ON THIS PROJECT.

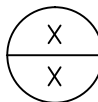
**RACEWAY SYMBOLS:**

- CONDUIT CONCEALED IN WALL OR IN CEILING.
- CONDUIT CONCEALED UNDER FLOOR OR BELOW GRADE.
- CONDUIT EXPOSED.
- SK — EXISTING SKELETAL, CONDUIT. SEE TELECOM CABLING NOTE #10 FOR MORE INFORMATION.

**TELECOMMUNICATION SYMBOLS:**

-  PIC, DATA OUTLET IN ONE (1) 4-11/16" BOX WITH SINGLE-GANG TILE RING CONSISTS OF (2) DATA OUTLETS UNLESS OTHERWISE NOTED. EACH ALPHA CHARACTER "X" INDICATES NUMBER OF UNIQUE DATA JACKS.
-  PIC, VOICE/DATA OUTLET IN TWO (2) 4-11/16" BOXES WITH DOUBLE-GANG TILE RINGS CONSISTS OF (2) DATA AND (2) VOICE OUTLETS UNLESS OTHERWISE NOTED. EACH ALPHA AND NUMERIC CHARACTER "X/#" INDICATES NUMBER OF UNIQUE DATA/VOICE JACKS.

**GENERAL SYMBOLS:**

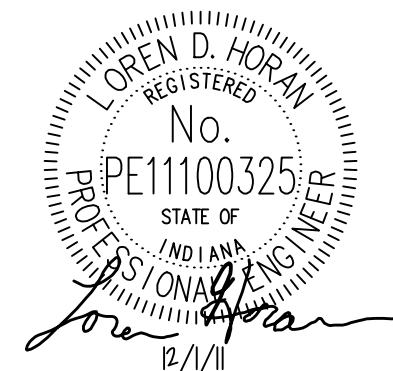
- NEW.
- EXISTING.
- DEMOLITION.
- ① PLAN NOTE.
- 1 DEMOLITION NOTE.
-  DETAIL OR SECTION MARKER.

**TELECOM ABBREVIATIONS:**

- AFF ABOVE FINISHED FLOOR. MOUNTING HEIGHTS FROM FINISHED FLOOR TO TOP OF BOX.
- PROVIDE FURNISH, INSTALL AND CONNECT.
- UDN UNLESS OTHERWISE NOTED.
- BC BONDING CONDUCTOR
- TBB TELECOMMUNICATIONS BONDING BACKBONE
- TBC TELECOMMUNICATIONS BONDING CONDUCTOR
- TGB TELECOMMUNICATIONS GROUNDING BUSBAR
- TMGB TELECOMMUNICATIONS MAIN GROUNDING BUSBAR

**TELECOM CABLING NOTES:**

1. NON-PLENUM RATED CABLING REQUIRED THROUGHOUT BUILDING.
2. ALL INSTALLED CABLING SHALL BE CONTINUOUS AND WITHOUT SPLICES.
3. "ABOVE ACCESSIBLE CEILING" SHALL BE INTERPRETED TO GENERALLY MEAN THE ACCESSIBLE CAVITY ABOVE SUSPENDED CEILING AND BENEATH THE DECK/FLOOR ABOVE. CONDUITS STUBBED ABOVE ACCESSIBLE CEILING SHALL TERMINATE IN A LOCATION IN WHICH A NORMAL HEIGHT PERSON CAN VIEW AND ACCESS WITHOUT STRAIN WHILE STANDING UPRIGHT ON A LADDER OR OTHER VERTICAL LIFT DEVICE.
4. CONDUITS LOCATED ABOVE HARD, INACCESSIBLE CEILINGS SHALL BE CONTINUOUS AND SHALL TERMINATE IN A LOCATION ABOVE ACCESSIBLE CEILING.
5. ALL JUMPERS FOR ACTIVATION OF CIRCUITS FOR DATA AND VOICE SHALL BE PROVIDED BY OWNER.
6. PULLBOXES ARE REQUIRED IN A STRAIGHT SECTION OF CONDUIT WITH RUNS THAT CONTAINS MORE THAN TWO (2) 90° BENDS OR THE SUM OF THE BENDS IS GREATER THAN 180° OR THAT EXTEND MORE THAN 100 FEET. FOLLOW SPECIFICATIONS FOR PULLBOX SIZING.
7. ALL PICS SHALL BE INSTALLED AT SAME HEIGHT AS OUTLETS, UNLESS OTHERWISE NOTED.
8. COLORS OF CABLING USED FOR ALL COMMUNICATIONS TECHNOLOGY WORK SHALL BE REVIEWED AND APPROVED PRIOR TO PROCUREMENT AND INSTALLATION.
9. CONTRACTOR SHALL REVIEW ALL PIC LABELS WITH OWNER AND PURDUE ITNS PERSONNEL PRIOR TO INSTALLATION. CONTRACTOR SHALL INCLUDE IN HIS COST THE PRICE TO RE-LABEL ALL PIC CONNECTIONS WITHIN THE SCOPE OF THIS PROJECT WHETHER NEW REMOVED OR EXISTING. LABELING SHALL INCLUDE FACEPLATE, CABLE AT THE WORK OUTLET END, CABLE AT THE TELECOM END, AND PATCH PANEL.
10. SKELETAL SYSTEM CONSISTS OF A RACEWAY WITH OPENINGS WHERE CABLING CAN ENTER/LEAVE THE RACEWAY. CONTRACTOR SHALL NOT INSTALL ANY DEVICES OR RACEWAY WITHIN 18 INCHES OF THE SKELETAL OPENINGS. CONTRACTOR SHALL ENSURE THAT THE SKELETAL OPENINGS REMAIN ACCESSIBLE DURING AND AFTER CONSTRUCTION.



**the etica**  
dnoib

• ARCHITECTURE • ENGINEERING  
• BUILDING ENVELOPE CONSULTING  
• CONSTRUCTION OBSERV. SERVICES

www.eticagroup.com

Northern Indiana Office  
407 Broadway St.  
New Haven, Indiana 46774  
Tel: 260.437.4404  
Fax: 317.536.3930

Corporate Office  
7172 N. Keystone Ave., Suite G  
Indianapolis, Indiana 46240  
Tel: 317.466.9520  
Fax: 317.536.3930

**RLR ASSOCIATES INC**  
Design for Distinguishing  
Environments

**Applied**  
Engineering Services  
9100 Keystone Crossing, Suite 200 • Indianapolis, IN 46240  
Tel: (317) 810-4141 • Fax: (317) 810-4140

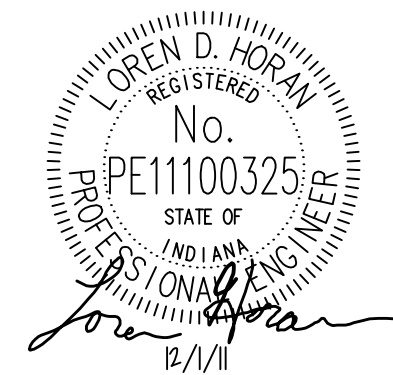
PROJECT TITLE:  
PURDUE UNIVERSITY  
WETHERILL HALL CHEMISTRY EXHIBIT

FREEHAFFER HALL OF ADMINISTRATION SERVICES  
401 S. GRANT STREET  
WEST LAFAYETTE, IN 47907-2024

PROJECT NUMBER: 1119	REVISION DATE:	CHECKED BY: NIRN
SHEET NUMBER: <b>T000</b>	DRAWN BY: NIRN	DATE ISSUED: 12.1.2011

# GENERAL LOW-VOLTAGE NOTES:

1. ALL WORK SHOWN IS EXISTING. NEW WORK IDENTIFIED SHALL BE BY THE ELECTRICAL/TELECOM TRADES, UNLESS OTHERWISE NOTED.
2. ALL WORK SHALL BE IN ACCORDANCE WITH THE LATEST EDITION OF THE NATIONAL ELECTRICAL CODE (NFPA 70).
3. THIS CONTRACTOR SHALL REVIEW THE COMPLETE SET OF DRAWINGS AND SPECIFICATIONS AND INCLUDE WORK FROM OTHER DIVISIONS THAT AFFECT HIS WORK IN HIS BID.
4. CONTRACTOR SHALL VISIT PROJECT SITE, PRIOR TO BIDDING, TO REVIEW EXISTING ELECTRICAL CONDITIONS. NOT ALL EXISTING TELECOM EQUIPMENT, DEVICES AND RACEWAY ARE SHOWN.
5. EACH CONTRACTOR SHALL FIELD VERIFY ALL EXISTING APPLICABLE CONDITIONS AND DIMENSIONS SHOWN ON THE DRAWINGS, AS PERTAINS TO THE INTENT OF THESE DRAWINGS. CONTRACTOR SHALL BRING TO THE ATTENTION OF THE ARCHITECT AND DESIGNER ANY DISCREPANCIES DISCOVERED PRIOR TO THE COMMENCEMENT OF ANY WORK AFFECTED BY OR RELATED TO SUCH DISCREPANCY. EACH CONTRACTOR SHALL BE RESPONSIBLE FOR ALL COSTS ASSOCIATED WITH OR CAUSED BY THAT CONTRACTOR'S FAILURE TO COMPLY WITH THIS REQUIREMENT.
6. COORDINATE ALL WORK WITH OWNER, SO AS TO NOT CAUSE DISRUPTION OF PURDUE STAFF.
7. ALL LOUD NOISE MUST BE LIMITED TO BETWEEN 6 AND 8 AM AND DURING CLASS BREAKS.
8. WORK IN OFFICES, LABS, CLASSROOMS, AND LIBRARY WILL REQUIRE THE PROTECTION (COVERING) OF FURNISHINGS AND ELECTRICAL/ELECTRONIC EQUIPMENT. DO NOT USE PLASTIC TO COVER COMPUTERS AND ELECTRONIC EQUIPMENT AT ANY TIME. CLOTH COVERS ARE ACCEPTABLE.
9. DATA INTERRUPTIONS MUST BE PROPERLY PURSUED TO REDUCE INCONVENIENCE TO THE NORMAL BUILDING ACTIVITY TO A MINIMUM. ARRANGEMENTS FOR INTERRUPTION OF TELECOM SERVICE TO UNIVERSITY AREAS MUST BE MADE IN WRITING WITH THE SUPERINTENDENT, OWNER'S TECHNOLOGY PERSONNEL, AND PROJECT MANAGER AT LEAST ONE WEEK BEFORE THE PROPOSED INTERRUPTIONS.
10. CONTRACTOR SHALL BE RESPONSIBLE FOR MAINTAINING TELEPHONE, DATA, CENTRAL SOUND, SECURITY, CCTV, CATV, AND ALARM SYSTEM SERVICES IN ALL EXISTING AREAS FOR DURATION OF PROJECT. CONTRACTOR SHALL COLLABORATE WITH OWNER'S TECHNOLOGY PERSONNEL AS NECESSARY AND PROVIDE TEMPORARY WIRING, CROSS-CONNECTS, TERMINATION DEVICES, AND LABOR TO MAINTAIN OPERATION ACCEPTABLE TO THE OWNER. CONTRACTOR SHALL REFER TO THE FRONT END DOCUMENTS OF THE SPECIFICATIONS FOR ADDITIONAL INFORMATION RELATED TO PHASING. ALL PHASING QUESTIONS SHALL BE ADDRESSED PRIOR TO THE CONTRACTOR'S BID SUBMISSION.
11. INTERRUPTIONS OF SERVICE IN AREAS WHERE UNIVERSITY PERSONNEL ARE WORKING WILL BE MADE BETWEEN THE HOURS OF 11:00 P.M. AND 6:00 A.M. UNLESS APPROVED BY SUPERINTENDENT AND OWNER'S TECHNOLOGY PERSONNEL.
12. DEMOLITION SHALL BE PERFORMED TO MINIMIZE DAMAGE TO ADJACENT RETAINED WORK. WHERE SUCH DAMAGE OCCURS, PATCH, REPAIR OR OTHERWISE RESTORE TO ITS ORIGINAL CONDITION.
13. WHERE DEMOLITION WORK LEAVES HOLES AND DAMAGED SURFACE THAT WILL BE EXPOSED IN FINISHED WORK OR THROUGH A FIRE SEPARATION. THESE HOLES AND DAMAGED SURFACES SHALL BE PATCHED AND REPAIRED TO MATCH ADJACENT FINISHED SURFACE.
14. CONTRACTOR SHALL INCLUDE IN HIS BID THE REMOVAL AND PROPER DISPOSAL OF ALL EXISTING TELECOM EQUIPMENT INDICATED TO BE REMOVED. HOWEVER, THE OWNER HAS THE FIRST RIGHT TO REFUSAL OF ALL EXISTING ELECTRICAL EQUIPMENT.
15. FOR ALL REMOVED PICS, REMOVE PIC, RACEWAY, AND WIRE BACK TO TELECOM ROOM AND COIL CABLE WITHIN ROOM. CONTRACTOR SHALL REMOVE THE CABLING FROM THE PATCH PANELS AND THE 110 BLOCKS.
16. UNLESS OTHERWISE NOTED ON THE DRAWINGS, ALL CUTTING AND PATCHING REQUIRED FOR THE TELECOM INSTALLATION SHALL BE PERFORMED BY THE APPROPRIATE TRADE AND PAID FOR BY THIS CONTRACTOR. ALL CUTTING AND PATCHING SHALL BE IN ACCORDANCE WITH THE APPLICABLE ARCHITECTURAL DETAILS/NOTES.
17. RELOCATED/REINSTALLED ITEMS SHALL BE CLEANED AND PLACED IN STORAGE UNTIL ITEMS ARE READY TO BE REINSTALLED. IF ITEM IS DAMAGED, IT SHALL BE REPAIRED OR REPLACED WITH NEW ITEM AS APPROVED.
18. ALL FIRESTOPPING SHALL BE PROVIDED UNDER DIVISION 07, "FIRESTOPPING".
19. COORDINATE INSTALLATION OF DEVICES AND WIRING WITH LIGHTING, HVAC ITEMS, AND STRUCTURAL MEMBERS.
20. FOLLOW ALL SPECIFICATIONS FOR TELECOMMUNICATIONS INSTALLATION.
21. TERMINATE ALL LOW-VOLTAGE CONDUITS WITH A BUSHING.
22. CONTRACTOR SHALL NOT MIX-N-MATCH PANDUIT AND WIREMOLD FOR SURFACE RACEWAY AND CONNECTIONS.
23. CONTRACTOR SHALL PROVIDE A MINIMUM 200LB. TENSION PULL STRING IN ALL EMPTY/FUTURE USE RACEWAYS.
24. ALL CONDUIT ROUTED IN AND THROUGH CONCRETE AND/OR BUILDING STRUCTURE WALLS SHALL BE RIGID METAL CONDUIT, UNLESS OTHERWISE NOTED.
25. WHEN NEW WALL AND FLOOR FINISHES ARE SHOWN, REMOVE ALL COVERPLATES AND REINSTALL AFTER NEW FINISHES HAVE BEEN COMPLETED.
26. ALL CONDUIT AND DEVICES SHALL BE PROVIDED WITH PURDUE APPROVED HANGERS CONFORMING TO STANDARDS OUTLINED. IN GENERAL ALL HANGERS SHALL BE ANCHORED FROM THE SIDE OF THE STRUCTURE AND NOT FROM THE BOTTOM.
27. TURN OVER ALL KEYS TO OWNER AT COMPLETION OF PROJECT.
28. FIRE STOP ALL WALL AND FLOOR PENETRATIONS WHETHER SURFACE IS RATED OR NOT.
29. DEVICE LOCATIONS AND RACEWAY ROUTING SHOWN IS DIAGRAMMATIC. CONTRACTOR SHALL VERIFY ALL CONDITIONS PRIOR TO STARTING CONSTRUCTION.



**the etica**  
 • ARCHITECTURE • ENGINEERING  
 • BUILDING ENVELOPE CONSULTING  
 • CONSTRUCTION OBSERV. SERVICES  
 www.eticagroup.com

**RLR ASSOCIATES INC**  
 Design for Distinguishing Environments

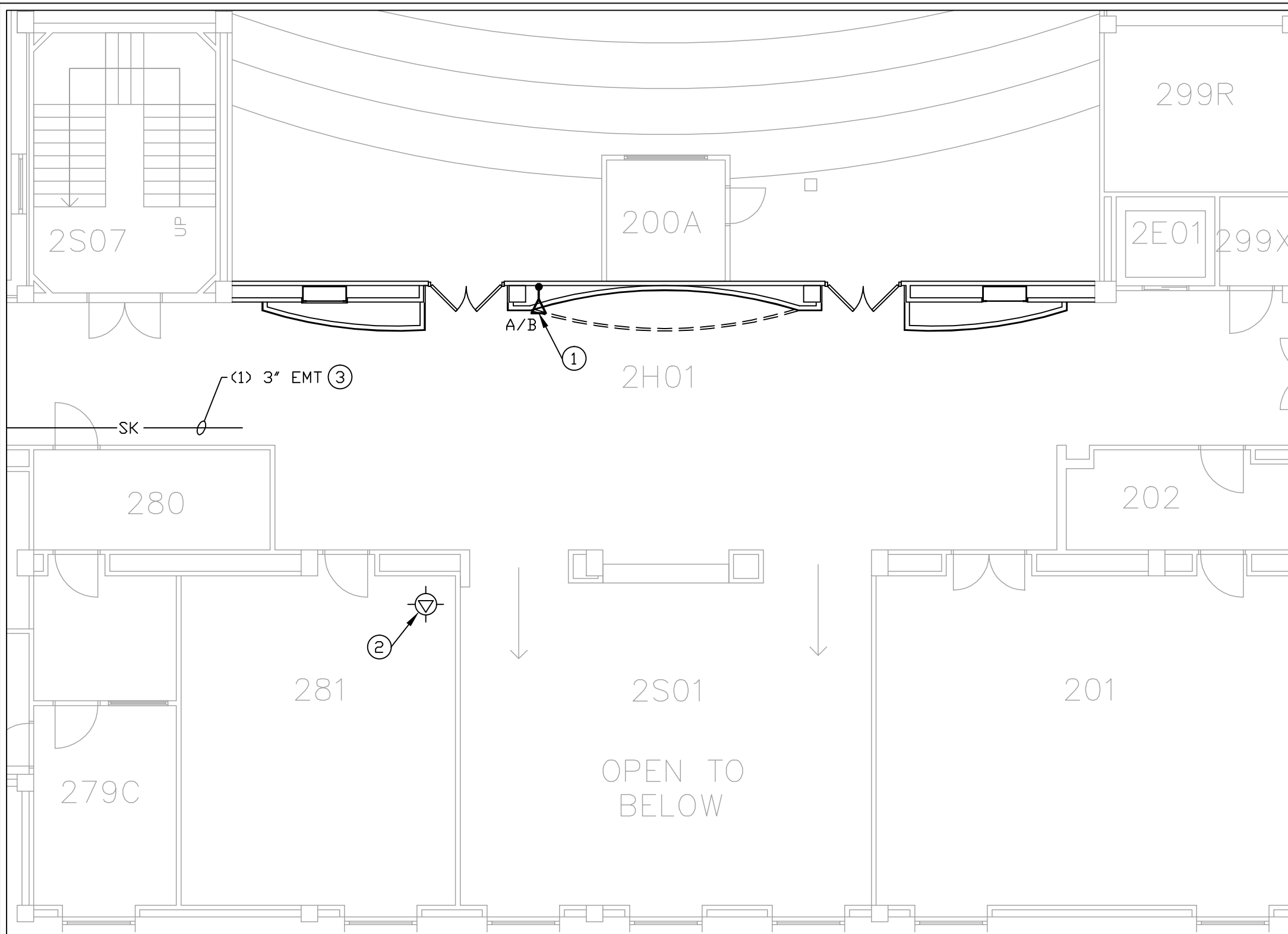
**Applied Engineering Services**  
 9100 Keystone Crossing, Suite 200 • Indianapolis, IN 46240  
 Tel: (317) 810-4141 • Fax: (317) 810-4140

Northern Indiana Office  
 407 Broadway St.  
 New Haven, Indiana 46774  
 Tel: 260.437.4404  
 Fax: 317.536.3930

PROJECT TITLE:  
 PURDUE UNIVERSITY  
 WETHERILL HALL CHEMISTRY EXHIBIT

FREEHAFFER HALL OF ADMINISTRATION SERVICES  
 401 S. GRANT STREET  
 WEST LAFAYETTE, IN 47907-2024

PROJECT NUMBER: 1119	REVISION DATE:	CHECKED BY: NIRN	
SHEET NUMBER: <b>T001</b>	DRAWN BY: NIRN	DATE ISSUED: 12.1.2011	



**GENERAL NOTES:**

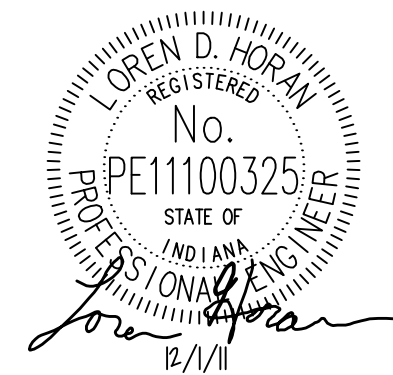
- 1. SEE DRAWINGS T001 AND T002 FOR ADDITIONAL GENERAL NOTES.

**PLAN NOTES:**

- ① PROVIDE SURFACE MOUNTED DATA ONLY PIC. PIC SHALL BE INSTALLED NEAR THE BOTTOM LOWER LEFT AREA OF THE DISPLAY. COORDINATE EXACT LOCATION AND INSTALLATION HEIGHT WITH DISPLAY VENDOR PRIOR TO ROUGH-IN. SEE DETAIL 'A' ON DRAWING T500 FOR ADDITIONAL INFORMATION. HORIZONTAL CABLING SHALL BE ROUTED TO HALLWAY 2H03 AND UTILIZE EXISTING SKELETAL CONDUIT TO TERMINATE CABLE IN IDF 143. FOR BIDDING PURPOSES, CONTRACTOR SHALL ASSUME THAT EACH DATA CABLE IS TO BE 290 FEET IN LENGTH.
- ② CONTRACTOR SHALL NOTIFY OWNER BEFORE PERFORMING WORK IN THIS AREA. OWNER WILL REMOVE EXISTING WIRELESS ACCESS POINTS (WAP) PRIOR TO CONSTRUCTION IN THIS AREA. CONTRACTOR SHALL NOTIFY OWNER WHEN CONSTRUCTION IS COMPLETE, SO THAT OWNER CAN REINSTALL WAP.
- ③ EXISTING TO REMAIN TELECOM RACEWAY.

**TELECOM PLAN**

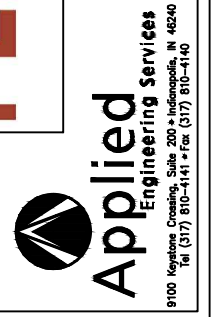
SCALE: 1/8" = 1'-0"



PROJECT NUMBER: 1119	REVISION DATE:	CHECKED BY: NPN
SHEET NUMBER: <b>T101</b>	DATE ISSUED: 12.1.2011	DRAWN BY: NPN

PROJECT TITLE:  
PURDUE UNIVERSITY  
WETHERILL HALL CHEMISTRY EXHIBIT

FREEHAFFER HALL OF ADMINISTRATION SERVICES  
401 S. GRANT STREET  
WEST LAFAYETTE, IN 47907-2024



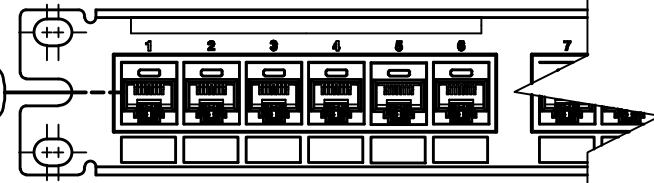
the **etica** dno:6  
ARCHITECTURE • ENGINEERING  
BUILDING ENVELOPE CONSULTING  
CONSTRUCTION OBSERV. SERVICES  
www.eticagroup.com

Northern Indiana Office  
407 Broadway St.  
New Haven, Indiana 46774  
Tel: 260.437.4404  
Fax: 317.536.3930

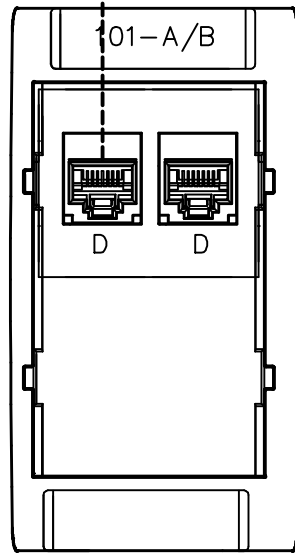
Corporate Office  
7172 N. Keystone Ave., Suite G  
Indianapolis, Indiana 46240  
Tel: 317.466.9520  
Fax: 317.536.3930

HORIZONTAL LINK IDENTIFIER SHALL MATCH PORT LOCATION ON PATCH PANEL. IDENTIFIER TO BE LABELED WITHIN 4" OF END OF CABLE.

B200-101-A CATEGORY 5E DATA CABLE 101-A

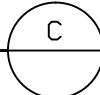


HORIZONTAL LINK IDENTIFIER SHALL MATCH PORT LOCATION ON PATCH PANEL. IDENTIFIER TO BE LABELED WITHIN 12" OF END OF CABLE.

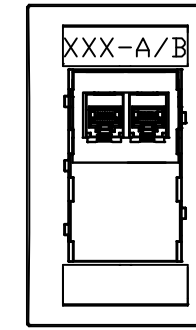


**TYPICAL TELECOM LABELING DETAIL**

SCALE: NONE



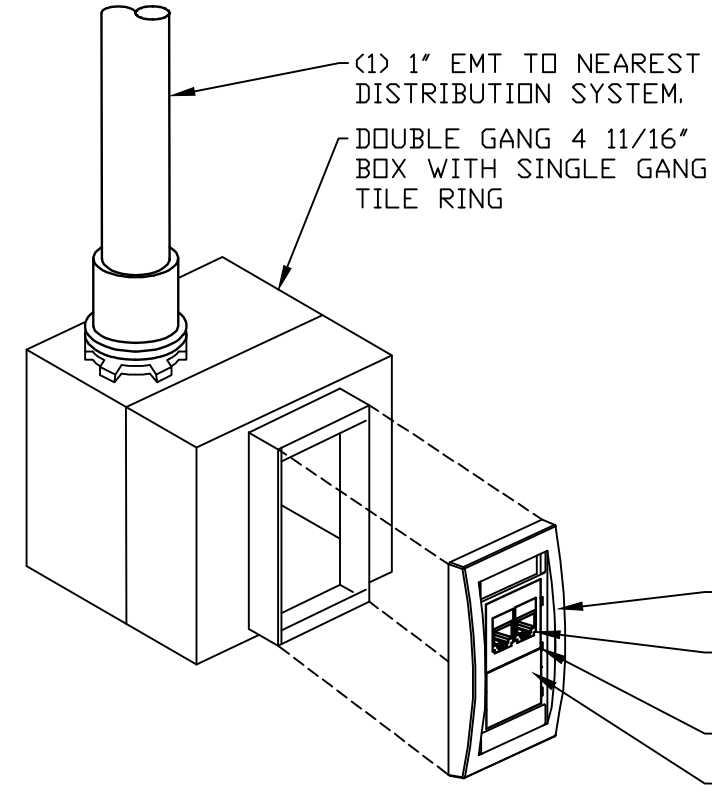
**FACE PLATE CONFIGURATION**



DATA ONLY

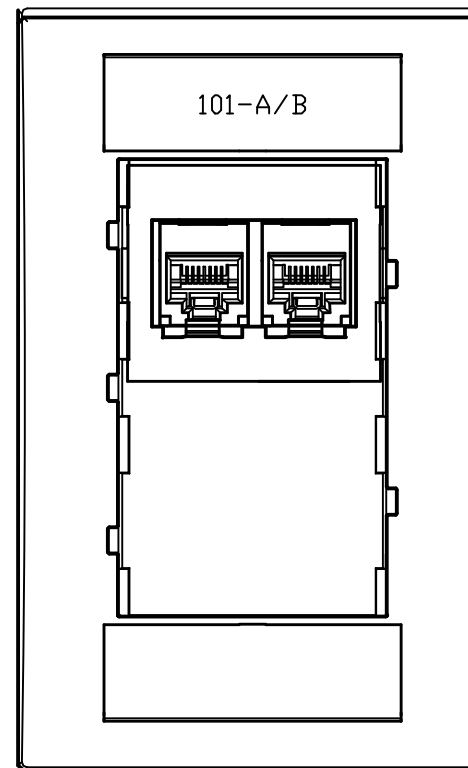
**SYMBOL LEGEND**

DATA JACK LOCATION  
PHONE JACK LOCATION



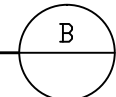
**SURFACE MOUNTED DATA ONLY PIC LOCATION**

SCALE: NONE



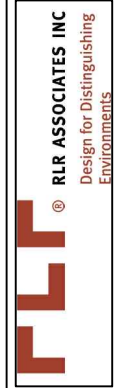
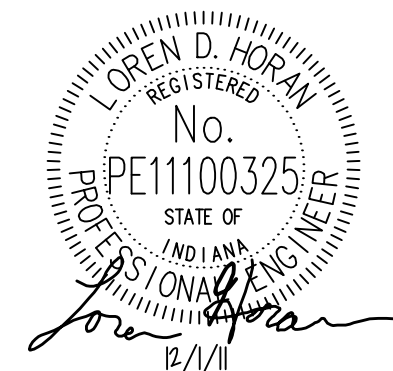
**DATA ONLY FACEPLATE LABELS**

SCALE: NONE



**NOTES:**

1. EACH DATA ONLY OUTLET CONSISTS OF (2) DATA JACKS.
2. LETTER DESIGNATION INDICATES A DATA JACK AT THE OUTLET LOCATION.
3. LABELING JACKS IN A SINGLE ROOM CONSISTS OF STARTING AT THE FIRST OUTLET LEFT OF DOOR AND PROCEEDING CLOCKWISE AROUND ROOM.

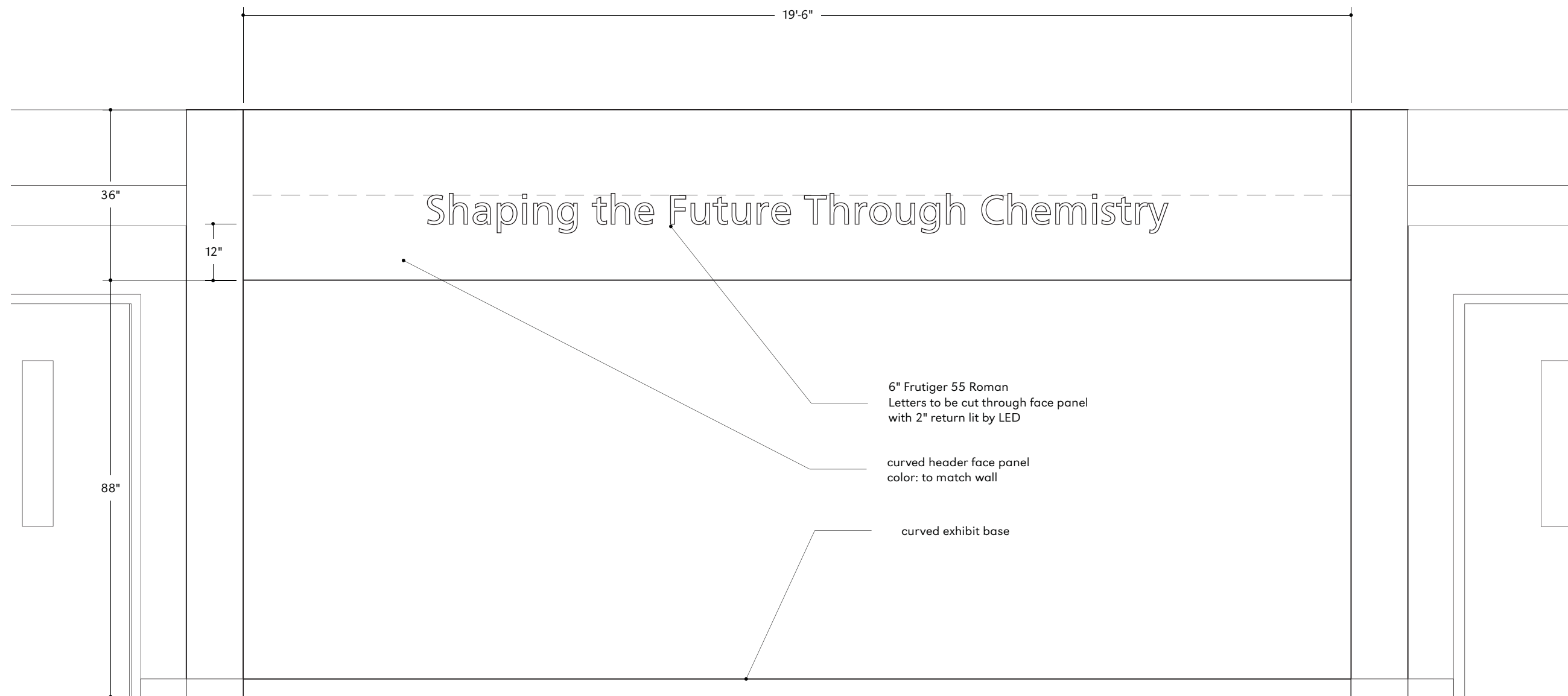


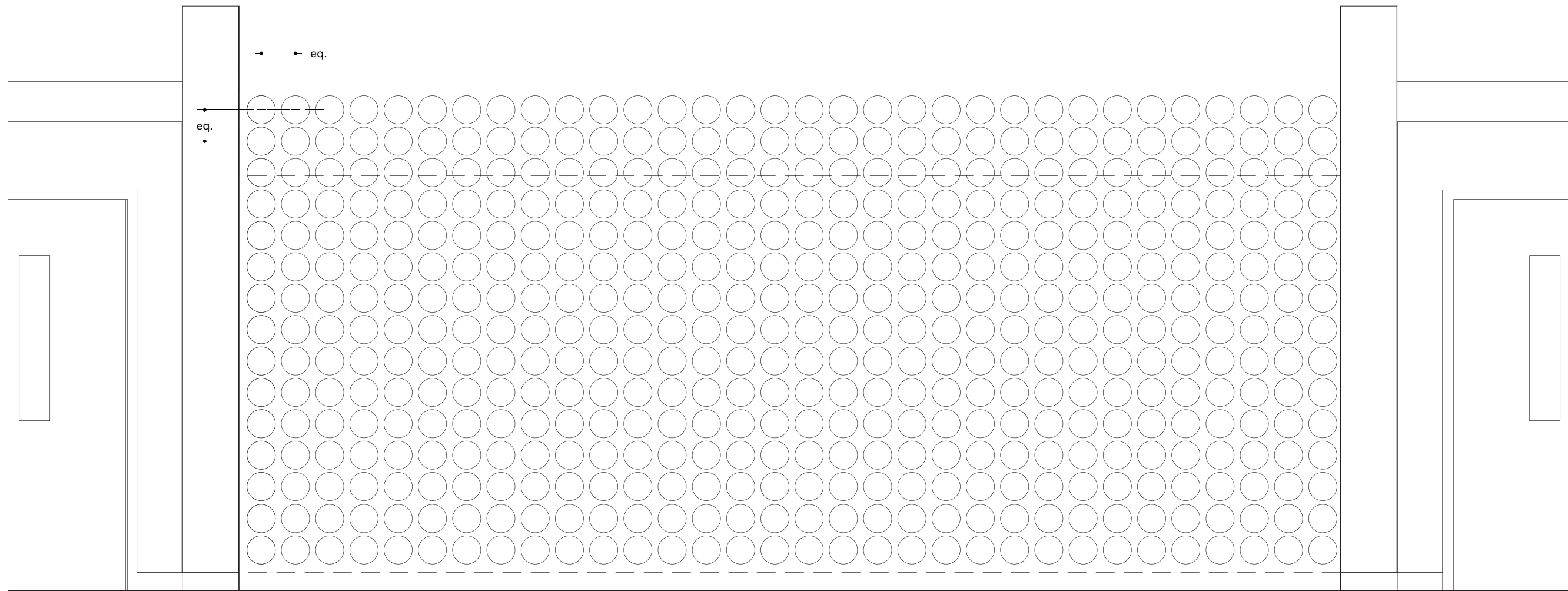
**Applied Engineering Services**  
9100 Keystone Crossing, Suite 200 • Indianapolis, IN 46240  
Tel: (317) 810-1141 • Fax: (317) 810-4140

**the etica**  
ARCHITECTURE • ENGINEERING  
BUILDING ENVELOPE CONSULTING  
CONSTRUCTION OBSERV. SERVICES  
www.eticagroup.com  
Northern Indiana Office  
407 Broadway St.  
New Haven, Indiana 46774  
Tel: 260.437.4404  
Fax: 317.536.3930

**PROJECT TITLE:**  
PURDUE UNIVERSITY  
WETHERILL HALL CHEMISTRY EXHIBIT  
**FREEHAFFER HALL OF ADMINISTRATION SERVICES**  
401 S. GRANT STREET  
WEST LAFAYETTE, IN 47907-2024

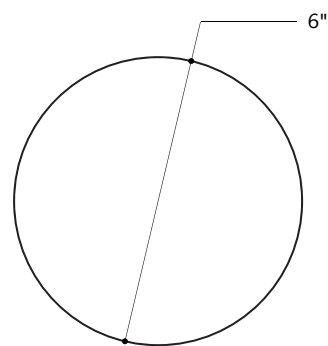
<b>PROJECT NUMBER:</b> 1119	<b>REVISION DATE:</b>	<b>CHECKED BY:</b> NIRN
<b>SHEET NUMBER:</b> T500	<b>DATE ISSUED:</b> 12.1.2011	<b>DRAWN BY:</b> NIRN





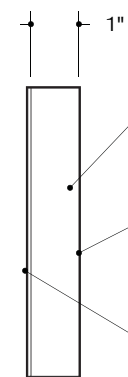
### REAR WALL ELEVATION

scale 1/2"=1'-0"



### DETAIL

scale 3"=1'-0"



### SIDE DETAIL

scale 3"=1'-0"

- acrylic disc  
color: black to match wall
- mounted to wall with 3M VHB tape
- sublimated aluminum graphic panel



RLR ASSOCIATES INC  
 1302 North Illinois Street  
 Indianapolis IN 46202 USA  
 tel 317 632 1300 fax 317 632 1302

Note: Contractor shall provide all fabrication, specification, and installation details for review and approval. Contractor to field verify all dimensions and check for obstructions. Drawings express design intent only and should not be used as shop drawings.

Client  
 Purdue University  
 Owner  
 Purdue University

Project Number  
 PUR-007AS#01  
 Project Name  
 Exhibit Design

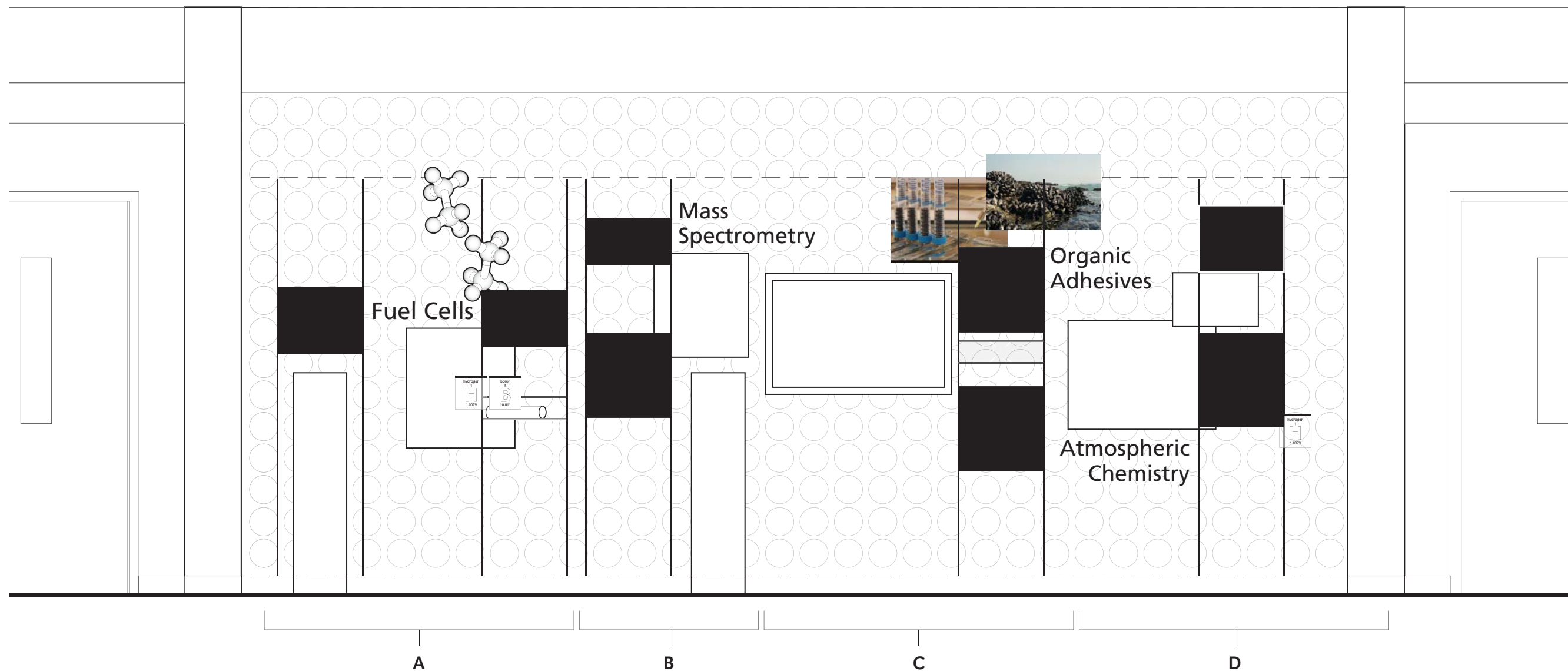
Date  
 1 December 2011  
 Phase  
 Design Documents

Sheet Title

## REAR WALL ELEVATION

Sheet Title

## X2.0



**REAR WALL ELEVATION**

scale 1/2"=1'-0"

Specific text as show is for placement only.  
Selected vendor willbe provided final copy.



RLR ASSOCIATES INC  
1302 North Illinois Street  
Indianapolis IN 46202 USA  
tel 317 632 1300 fax 317 632 1302

Note: Contractor shall provide all fabrication, specification, and installation details for review and approval. Contractor to field verify all dimensions and check for obstructions. Drawings express design intent only and should not be used as shop drawings.

Client  
Purdue University  
Owner  
Purdue University

Project Number  
PUR-007AS#01  
Project Name  
Exhibit Design

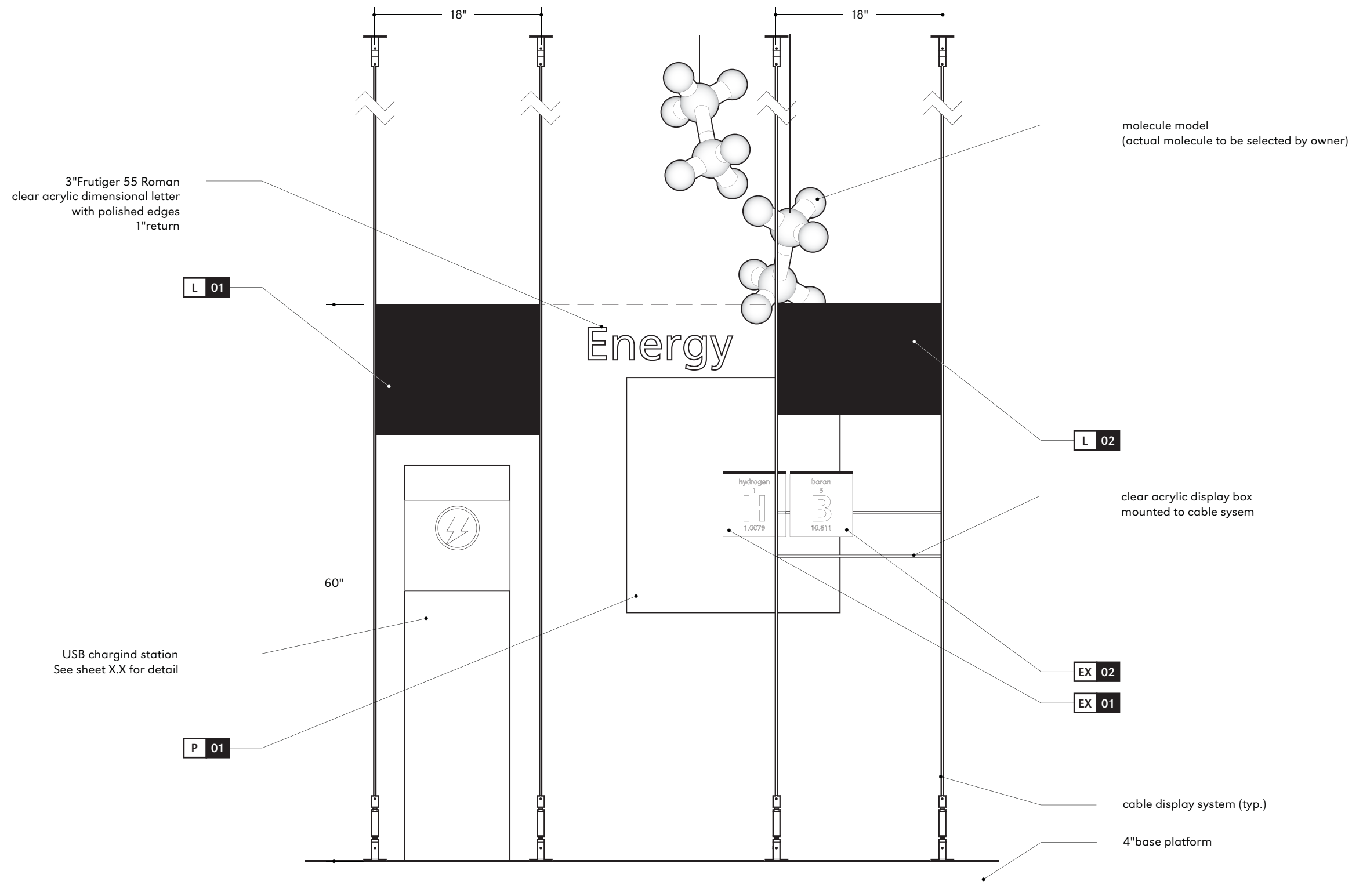
Date  
1 December 2011  
Phase  
Design Documents

Sheet Title

**EXHIBIT ELEVATION**

Sheet Title

**X3.0**



**ELEVATION**

scale: 1"=1'-0"

Specific text as show is for placement only.  
Selected vendor will be provided final copy.



RLR ASSOCIATES INC  
1302 North Illinois Street  
Indianapolis IN 46202 USA  
tel 317 632 1300 fax 317 632 1302

Note: Contractor shall provide all fabrication, specification, and installation details for review and approval. Contractor to field verify all dimensions and check for obstructions. Drawings express design intent only and should not be used as shop drawings.

Client  
Purdue University  
Owner  
Purdue University

Project Number  
PUR-007AS#01  
Project Name  
Exhibit Design

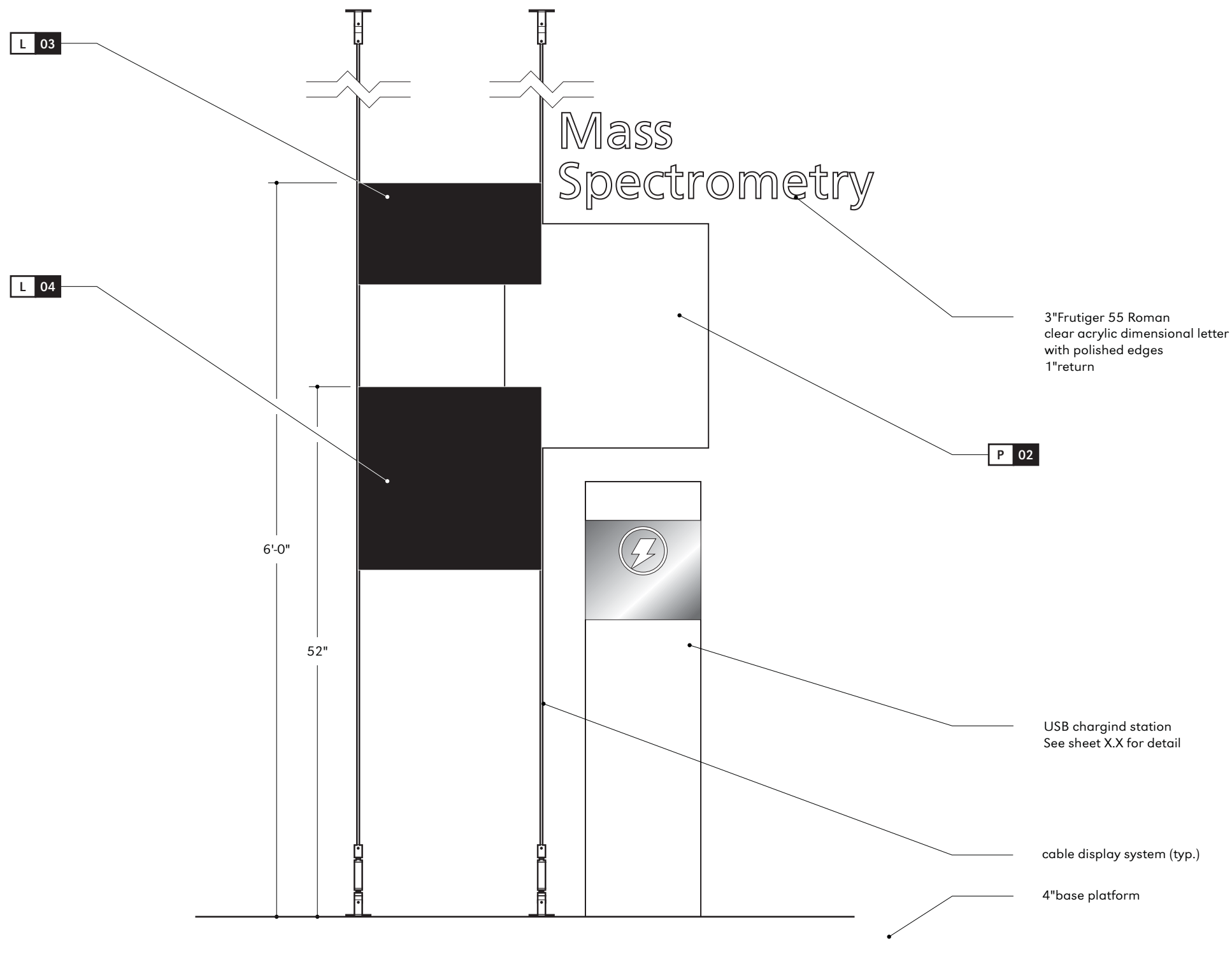
Date  
1 December 2011  
Phase  
Design Documents

Sheet Title

**Area 1A**

Sheet Title

**X4.0**



**ELEVATION**

scale: 1"=1'-0"

Specific text as show is for placement only.  
Selected vendor will be provided final copy.



RLR ASSOCIATES INC  
1302 North Illinois Street  
Indianapolis IN 46202 USA  
tel 317 632 1300 fax 317 632 1302

Note: Contractor shall provide all fabrication, specification, and installation details for review and approval. Contractor to field verify all dimensions and check for obstructions. Drawings express design intent only and should not be used as shop drawings.

Client  
Purdue University  
Owner  
Purdue University

Project Number  
PUR-007AS#01  
Project Name  
Exhibit Design

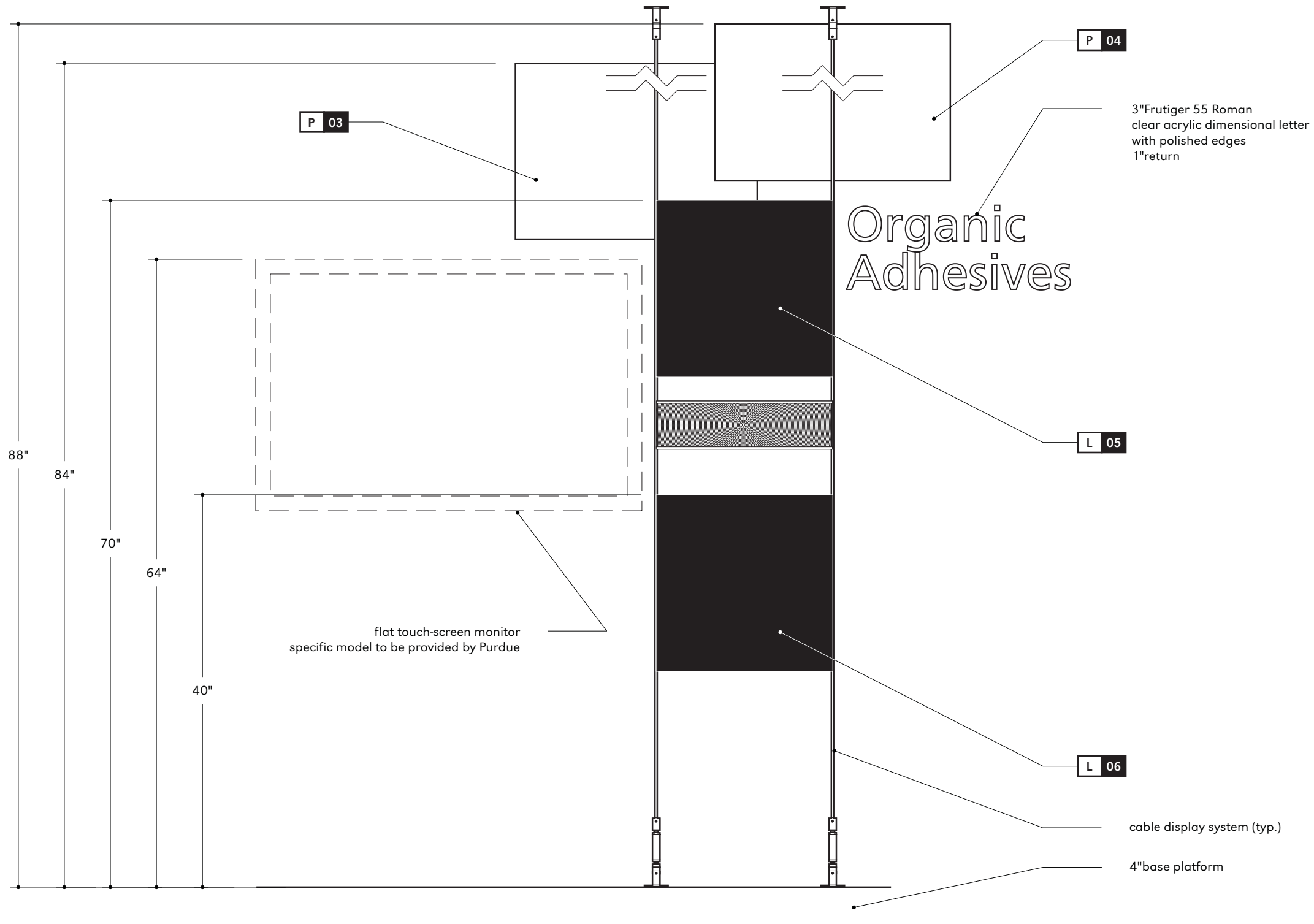
Date  
1 December 2011  
Phase  
Design Documents

Sheet Title

**Area 1B**

Sheet Title

**X5.0**



3"Frutiger 55 Roman  
clear acrylic dimensional letter  
with polished edges  
1"return

Organic  
Adhesives

flat touch-screen monitor  
specific model to be provided by Purdue

cable display system (typ.)

4"base platform

**ELEVATION**

scale: 1"= 1'-0"

Specific text as show is for placement only.  
Selected vendor willbe provided final copy.



**RLR ASSOCIATES INC**  
1302 North Illinois Street  
Indianapolis IN 46202 USA  
tel 317 632 1300 fax 317 632 1302

Note: Contractor shall provide all fabrication, specification, and installation details for review and approval. Contractor to field verify all dimensions and check for obstructions. Drawings express design intent only and should not be used as shop drawings.

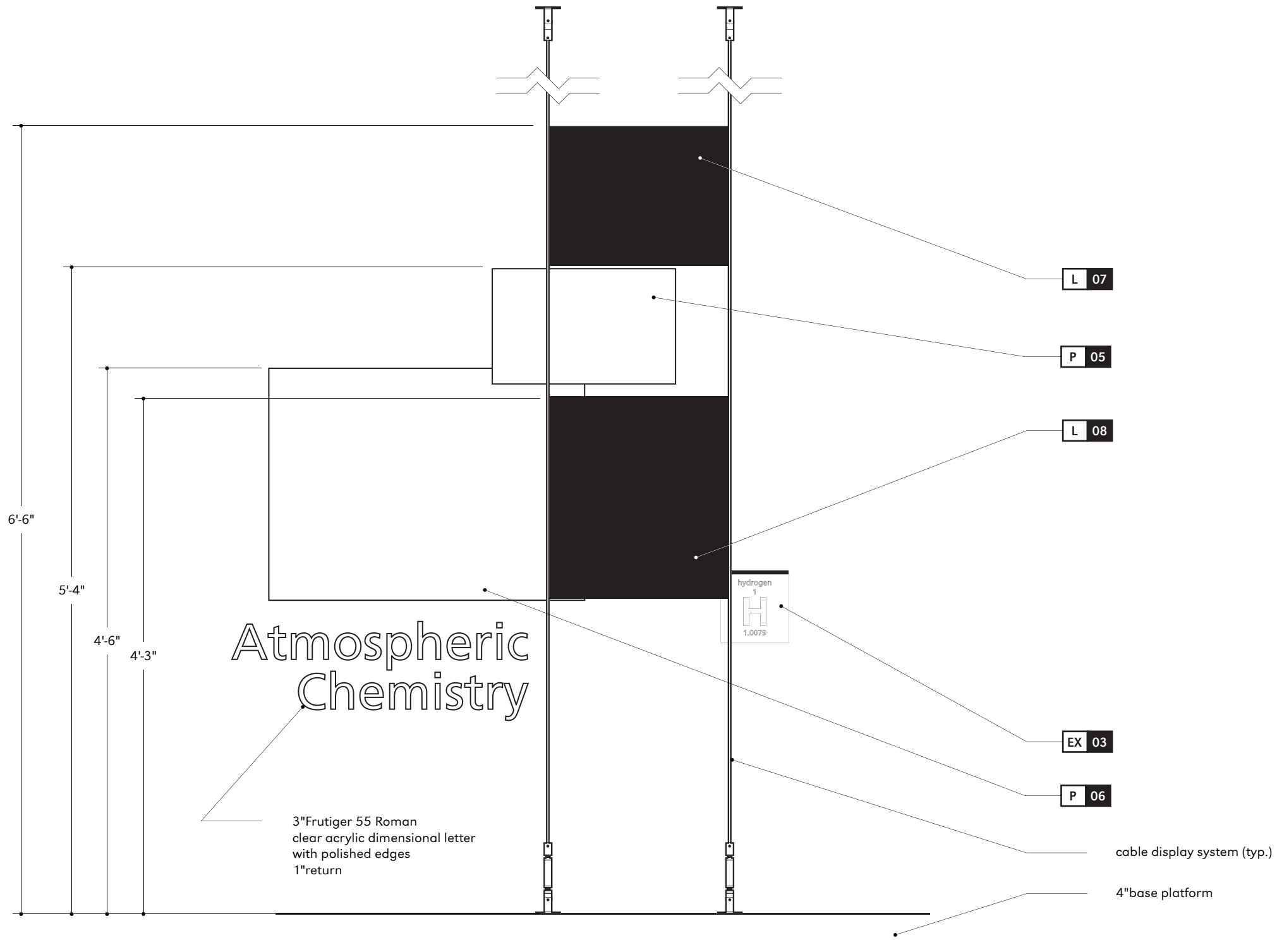
Client  
Purdue University  
Owner  
Purdue University

Project Number  
PUR-007AS#01  
Project Name  
Exhibit Design

Date  
1 December 2011  
Phase  
Design Documents

Sheet Title  
**Area 1C**

Sheet Title  
**X6.0**



**ELEVATION**

scale: 1"=1'-0"

Specific text as show is for placement only.  
Selected vendor will be provided final copy.



**RLR ASSOCIATES INC**  
1302 North Illinois Street  
Indianapolis IN 46202 USA  
tel 317 632 1300 fax 317 632 1302

Note: Contractor shall provide all fabrication, specification, and installation details for review and approval. Contractor to field verify all dimensions and check for obstructions. Drawings express design intent only and should not be used as shop drawings.

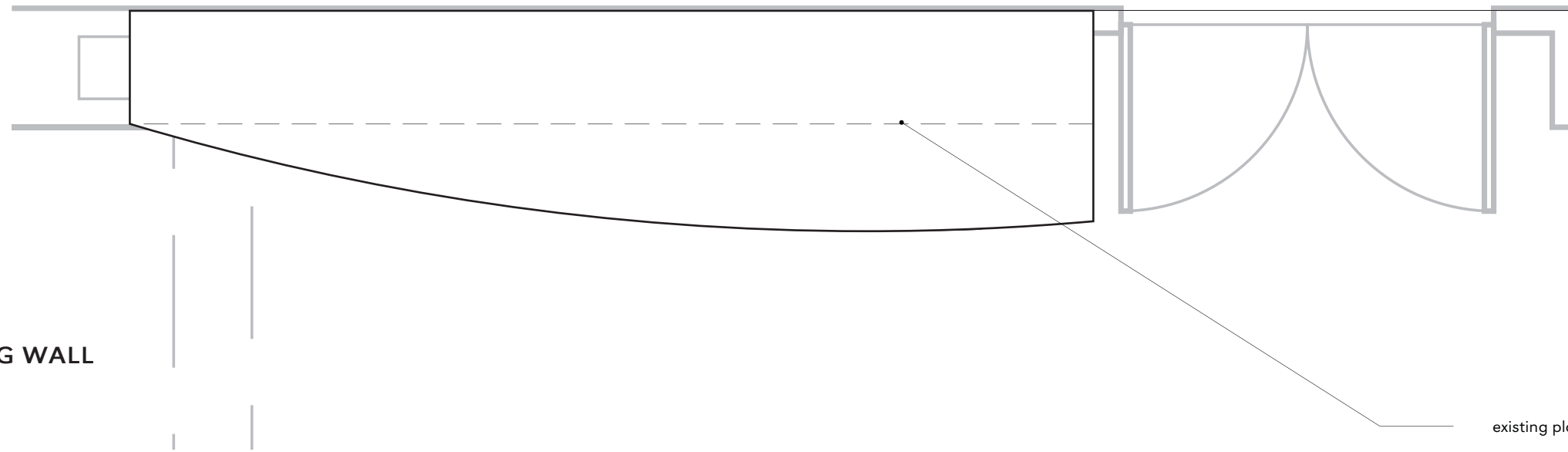
Client  
Purdue University  
Owner  
Purdue University

Project Number  
PUR-007AS#01  
Project Name  
Exhibit Design

Date  
1 December 2011  
Phase  
Design Documents

Sheet Title  
**Area 1D**

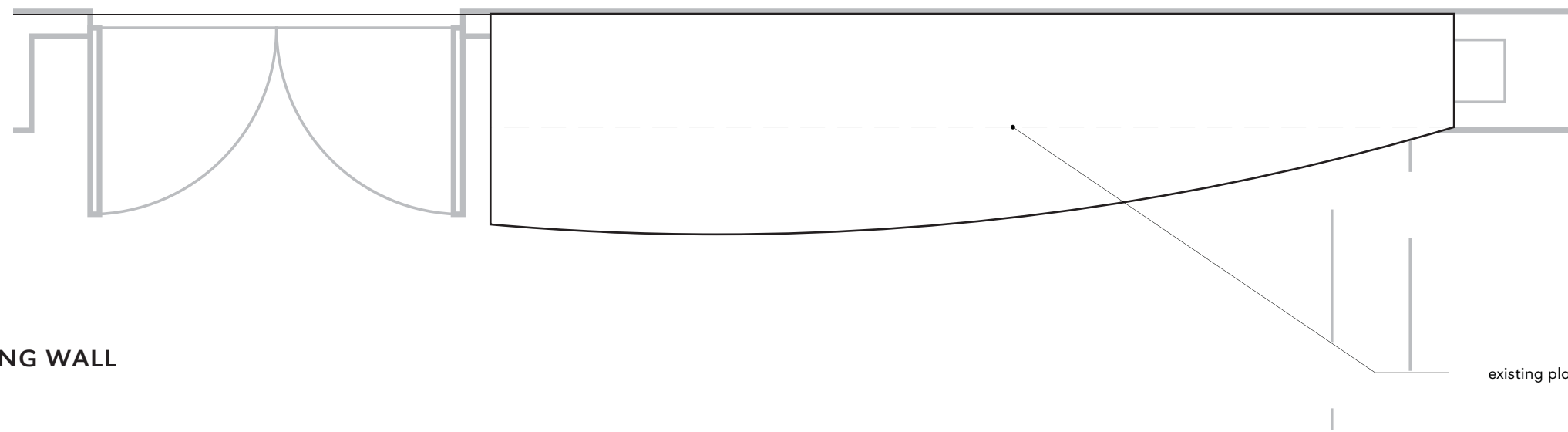
Sheet Title  
**X7.0**



AREA 2: LEFT WING WALL

scale: 1/2"=1'-0"

existing plaster wall



AREA 3: RIGHT WING WALL

scale: 1/2"=1'-0"

existing plaster wall



RLR ASSOCIATES INC  
1302 North Illinois Street  
Indianapolis IN 46202 USA  
tel 317 632 1300 fax 317 632 1302

Note: Contractor shall provide all fabrication, specification, and installation details for review and approval. Contractor to field verify all dimensions and check for obstructions. Drawings express design intent only and should not be used as shop drawings.

Client  
Purdue University  
Owner  
Purdue University

Project Number  
PUR-007AS#01  
Project Name  
Exhibit Design

Date  
1 December 2011  
Phase  
Design Documents

Sheet Title

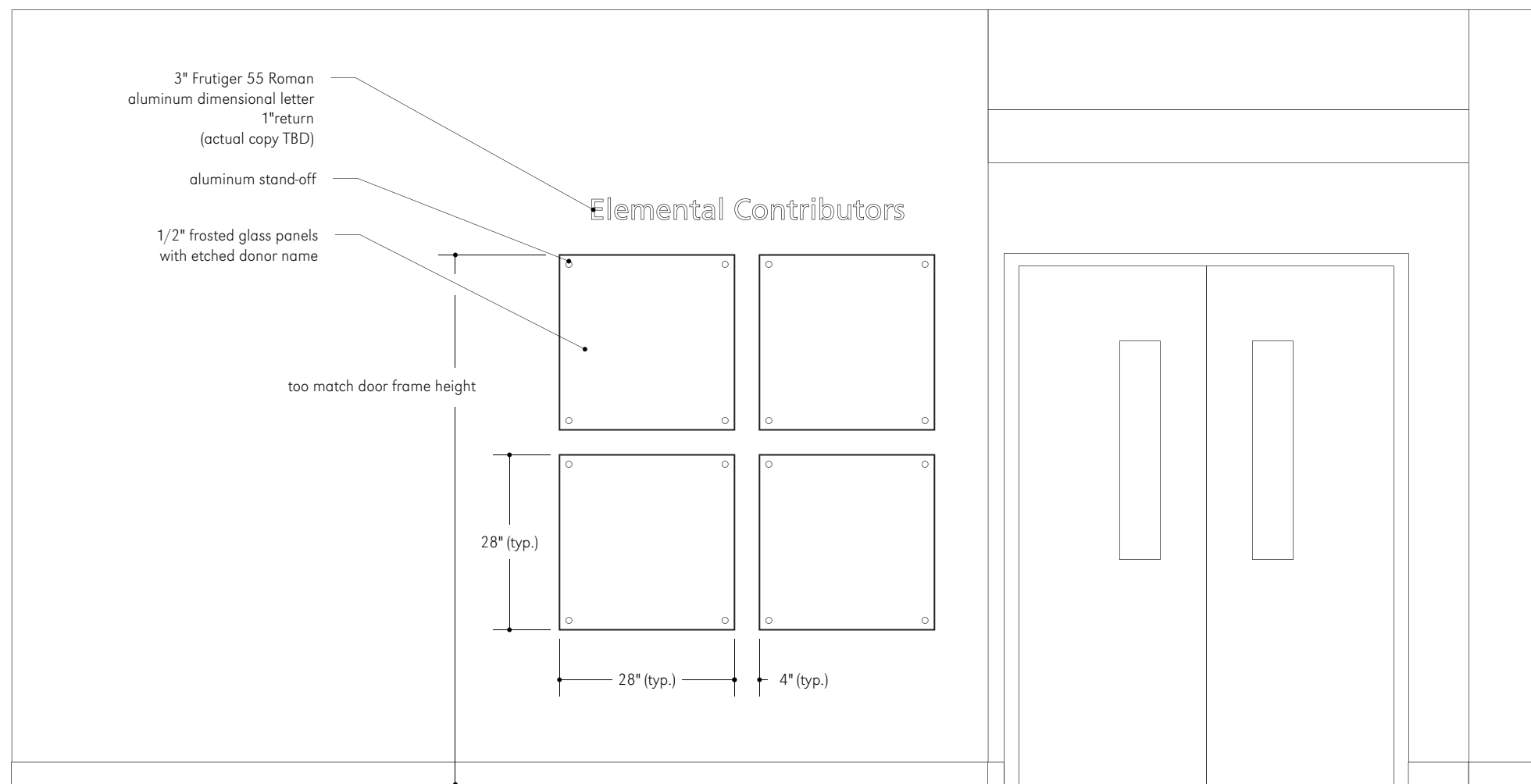
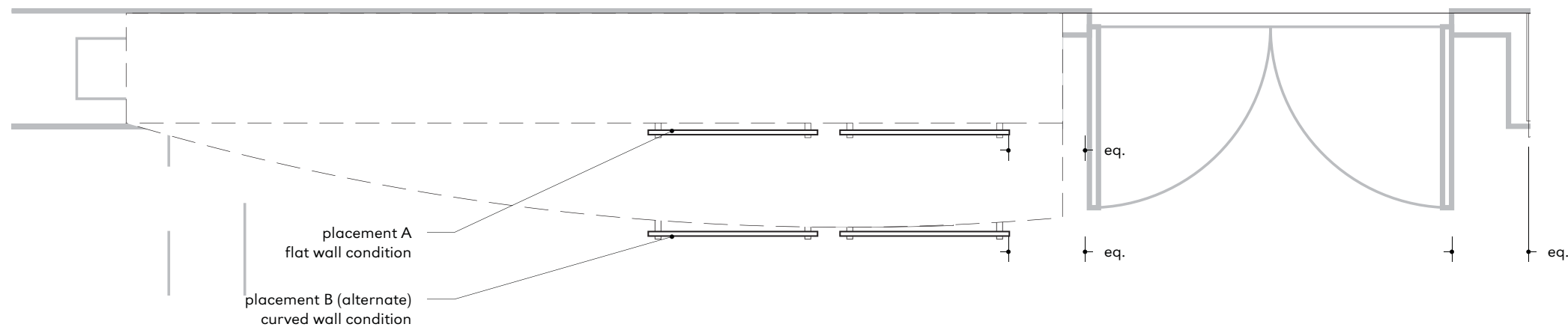
AREA 2 & 3: WING WALLS

Sheet Title

X8.0

### PLAN VIEW

scale: 1/2"=1'-0"



### ELEVATION

scale: 1/2"=1'-0"

Specific text as show is for placement only.  
Selected vendor will be provided final copy.



RLR ASSOCIATES INC  
 1302 North Illinois Street  
 Indianapolis IN 46202 USA  
 tel 317 632 1300 fax 317 632 1302

Note: Contractor shall provide all fabrication, specification, and installation details for review and approval. Contractor to field verify all dimensions and check for obstructions. Drawings express design intent only and should not be used as shop drawings.

Client  
 Purdue University  
 Owner  
 Purdue University

Project Number  
 PUR-007AS#01  
 Project Name  
 Exhibit Design

Date  
 1 December 2011  
 Phase  
 Design Documents

Sheet Title

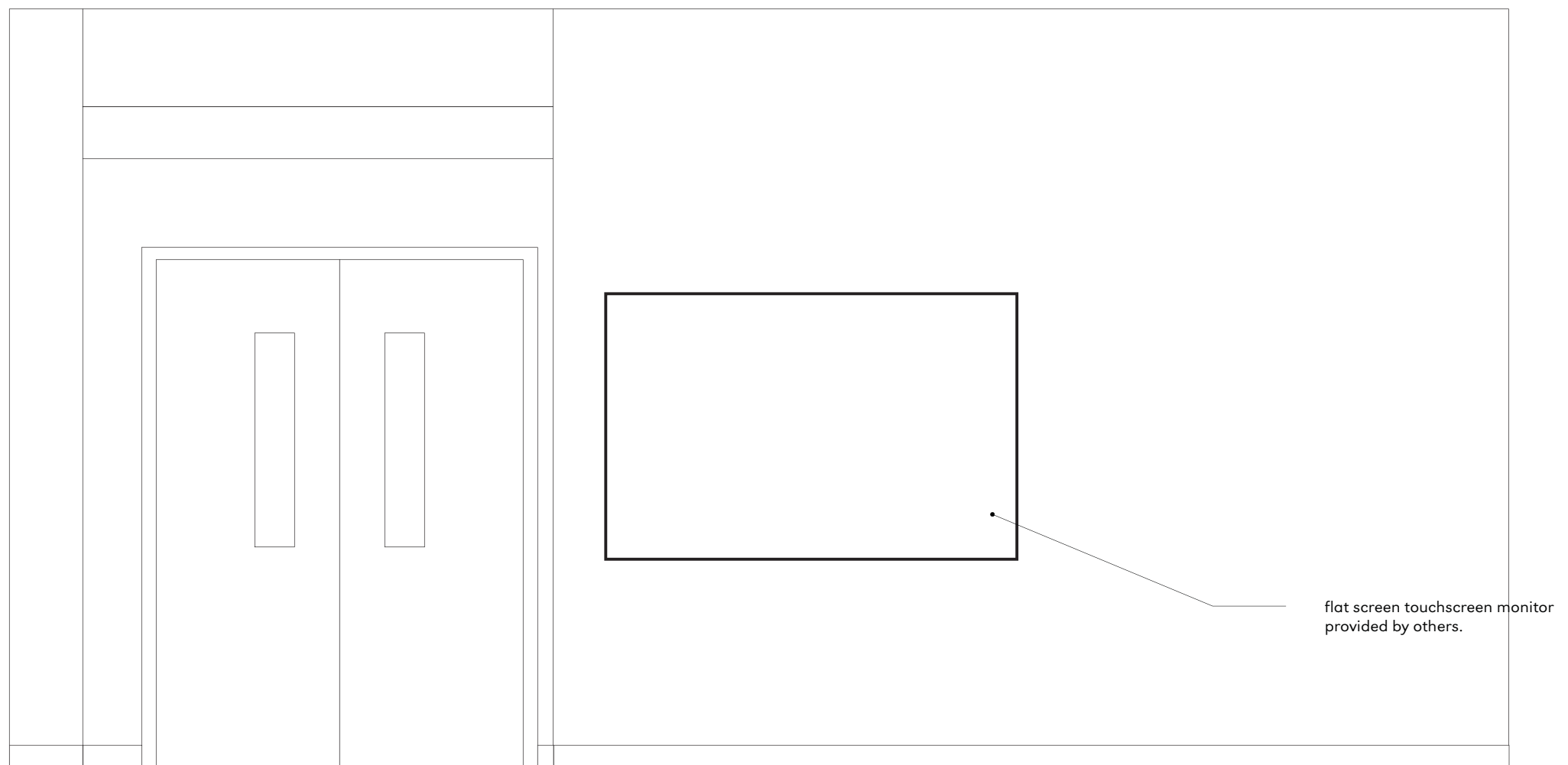
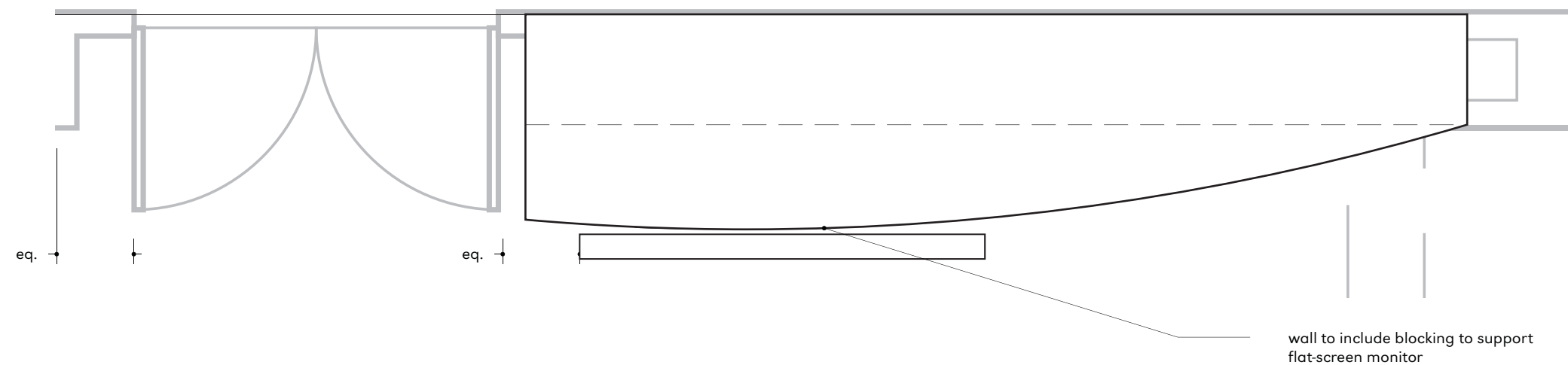
## Area 2: Donor Wall

Sheet Title

## X9.0

**PLAN VIEW**

scale: 1/2"=1'-0"



**ELEVATION**

scale: 1/2"=1'-0"



RLR ASSOCIATES INC  
 1302 North Illinois Street  
 Indianapolis IN 46202 USA  
 tel 317 632 1300 fax 317 632 1302

Note: Contractor shall provide all fabrication, specification, and installation details for review and approval. Contractor to field verify all dimensions and check for obstructions. Drawings express design intent only and should not be used as shop drawings.

Client  
 Purdue University  
 Owner  
 Purdue University

Project Number  
 PUR-007AS#01  
 Project Name  
 Exhibit Design

Date  
 1 December 2011  
 Phase  
 Design Documents

Sheet Title

**Area 3**

Sheet Title

**X10.0**