

ADDENDUM NO. 1 - DECEMBER 22, 2011

West Lafayette Campus
LYNN HALL ROOM 1214 AND 1222
CLASSROOM LABORATORY RENOVATION - 2012

Project ID: 10835
Building Index NO: V-1
Purdue University
West Lafayette, Indiana

SCHOLER CORPORATION
111 Walter Scholer Drive
LAFAYETTE, INDIANA

COMM. NO. 2011.14

THE FOLLOWING CHANGES AND CORRECTIONS SHALL APPLY AND BE A PART OF THE CONTRACT DOCUMENTS INCLUDING THE BIDDING DOCUMENTS, SPECIFICATIONS, AND DRAWINGS.

PROJECT MANUAL AND SPECIFICATIONS

INSTRUCTIONS TO BIDDER

1. Page BD-1: At Article 1.01, add a new paragraph 'I' to read as follows:

"I. Pre-Bid Conference:

1. A voluntary 'Pre-Bid Conference' with the representatives of the Owner and Architect is scheduled for January 3, 2012, at 2:00 P.M. (local time) in Room 1214 of Lynn Hall on the campus of Purdue University, West Lafayette Campus.
1. This conference is voluntary but Bidders/Contractors intending to bid the Project are encouraged to attend."

SPECIFICATIONS

DIVISION 01 - GENERAL CONDITIONS

SECTION 01 1100 - SUMMARY OF WORK

1. Page 01 1100-1: At Article 1.01, paragraph 'D', subparagraph '2', delete the words which read ".....be the direct contract for....." and substitute the following:
".....be the direct contact for....."

DIVISION 23 - HEATING, VENTILATING, AND AIR CONDITIONING

SECTION 23 7315 - FIELD ERECTED INDOOR CENTRAL-STATION AIR-HANDLING UNITS

1. Page 23 7315-3: At Article 2.02, paragraph 'A', at the third sentence, delete the words which read ".....performed at 4" of static pressure." to read as follows:
".....performed at 6" of static pressure."

DRAWINGS

REVISION DRAWINGS

1. 'SHEET R1.1, SHEET 1 OF 3, "PARTIAL PENTHOUSE HVAC SECTION, ADDENDUM 1, SHEET M-302", DATE: 12-21-11"', is attached to this Addendum and as such is hereby made part of the Contract Documents.
2. 'SHEET R1.2, SHEET 2 OF 3, "TELECOM DETAILS, ADDENDUM 1, SHEET T-501", DATE: 12-21-11"', is attached to this Addendum and as such is hereby made part of the Contract Documents.
3. 'SHEET R1.3, SHEET 3 OF 3, "TELECOM DETAILS, ADDENDUM 1, SHEET T-501", DATE: 12-21-11"', is attached to this Addendum and as such is hereby made part of the Contract Documents.
4. 'SHEET R2.1, SHEET 1 OF 1, "COLOR SCHEDULE, ADDENDUM 1", DATE: DECEMBER 22, 2011', is attached to this Addendum and as such is hereby made part of the Contract Documents.
5. New (Revised) "SHEET M-501 - MECHANICAL DETAILS", REVISION 1, REVISION DATE: 12-21-11", as attached to this Addendum and as such shall become part of the Contract Documents.
6. New (Revised) "SHEET M-701 - TEMPERATURE CONTROL DIAGRAMS", REVISION 1, REVISION DATE: 12-21-11", as attached to this Addendum and as such shall become part of the Contract Documents.



MECHANICAL DRAWINGS

SHEET M-302 - MECHANICAL SECTIONS

1. Under the section title "PENTHOUSE HVAC SECTION/1", add the following note:
"SEE 'SHEET R1.1, SHEET 1 OF 3, "PARTIAL PENTHOUSE HVAC SECTION", AS ISSUED BY ADDENDUM NO. 1, DATED DECEMBER 22, 2011."

SHEET M-501 - MECHANICAL DETAILS

1. Delete "SHEET M-501" in its entirety, and replace with revised "SHEET M-501, ADDENDUM No. 1, REVISION 1, dated 12-21-11", as attached to this Addendum and as such shall become part of the Contract Documents.

SHEET M-601 - MECHANICAL SCHEDULES

1. At the 'STEAM PREHEAT COIL SCHEDULE', Change 'NOTE #1' to read as follows:
"PROVIDE HORIZONTAL TUBE, SAME END CONNECTIONS."

SHEET M-701 - TEMPERATURE CONTROL DIAGRAMS

1. Delete "SHEET M-701" in its entirety, and replace with revised "SHEET M-701, ADDENDUM No. 1, REVISION 1, dated 12-21-11", as attached to this Addendum and as such shall become part of the Contract Documents.

SHEET M-801 - TEMPERATURE CONTROL DRAWINGS AND DETAILS

1. Add "SHEET M-801 - TEMPERATURE CONTROL DRAWINGS AND DETAILS", REVISION 1, REVISION DATE: 12-21-11", as attached to this Addendum and as such shall become part of the Contract Documents.

SHEET M-802 - TEMPERATURE CONTROL DRAWINGS AND DETAILS

1. Add "SHEET M-802 - TEMPERATURE CONTROL DRAWINGS AND DETAILS", REVISION 1, REVISION DATE: 12-21-11", as attached to this Addendum and as such shall become part of the Contract Documents.

SHEET M-803 - TEMPERATURE CONTROL DRAWINGS AND DETAILS

1. Add "SHEET M-803 - TEMPERATURE CONTROL DRAWINGS AND DETAILS", REVISION 1, REVISION DATE: 12-21-11", as attached to this Addendum and as such shall become part of the Contract Documents.

SHEET M-804 - TEMPERATURE CONTROL DRAWINGS AND DETAILS

1. Add "SHEET M-804 - TEMPERATURE CONTROL DRAWINGS AND DETAILS", REVISION 1, REVISION DATE: 12-21-11", as attached to this Addendum and as such shall become part of the Contract Documents.

SHEET M-805 - TEMPERATURE CONTROL DRAWINGS AND DETAILS

1. Add "SHEET M-805 - TEMPERATURE CONTROL DRAWINGS AND DETAILS", REVISION 1, REVISION DATE: 12-21-11", as attached to this Addendum and as such shall become part of the Contract Documents.

SHEET M-806 - TEMPERATURE CONTROL DRAWINGS AND DETAILS

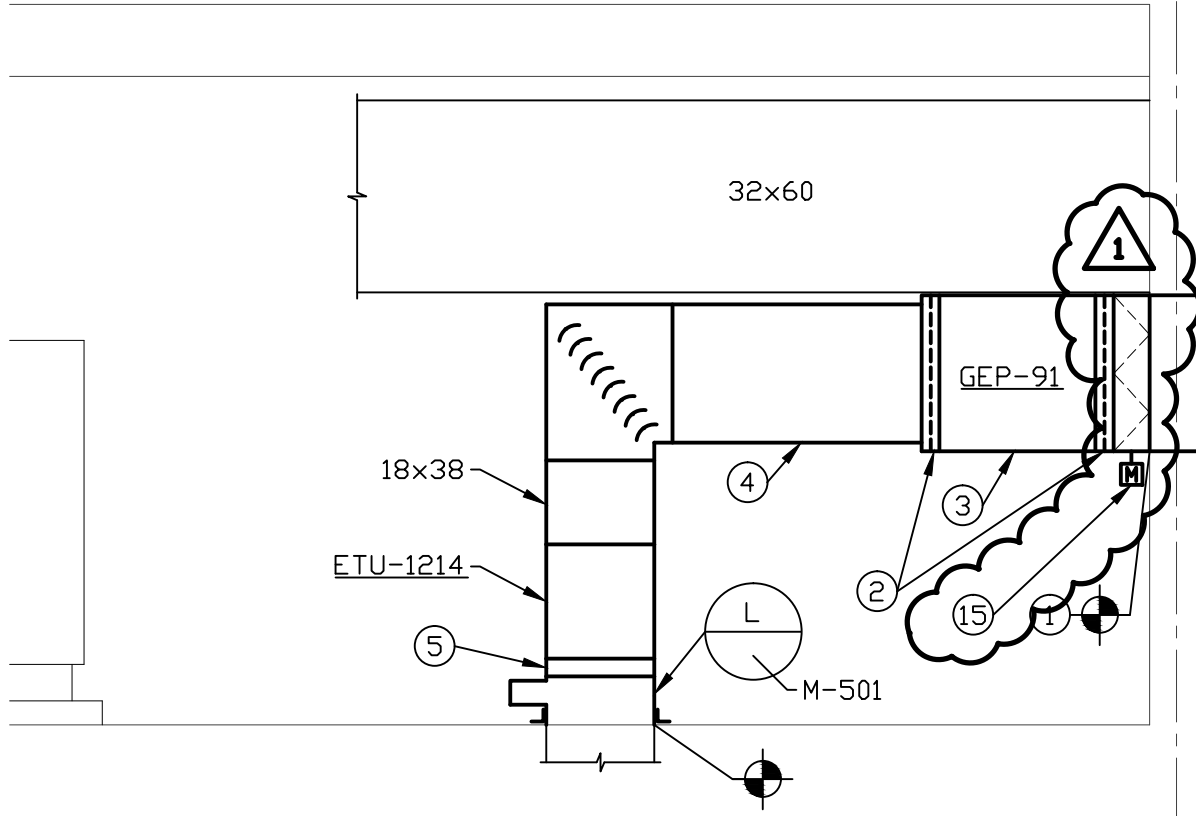
1. Add "SHEET M-806 - TEMPERATURE CONTROL DRAWINGS AND DETAILS", REVISION 1, REVISION DATE: 12-21-11", as attached to this Addendum and as such shall become part of the Contract Documents.

TELECOMMUNICATIONS DRAWINGS

SHEET T-501 - TELECOM DETAILS

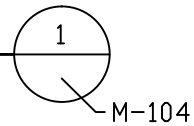
1. Delete "DETAIL A" in its entirety, and replace with revised 'SHEET R1.2, SHEET 2 OF 3, "TELECOM DETAILS", ADDENDUM NO. 1, PROJECT ID 10835, COMM. NO. 2011.14, DATED 12-21-11" as issued by Addendum No. 1, dated December 22, 2011.
2. Delete "DETAIL B" in its entirety, and replace with revised 'SHEET R1.3, SHEET 3 OF 3, "TELECOM DETAILS", ADDENDUM NO. 1, PROJECT ID 10835, COMM. NO. 2011.14, DATED 12-21-11" as issued by Addendum No. 1, dated December 22, 2011.

END OF ADDENDUM



PENTHOUSE HVAC SECTION

SCALE: 3/8" = 1'-0"

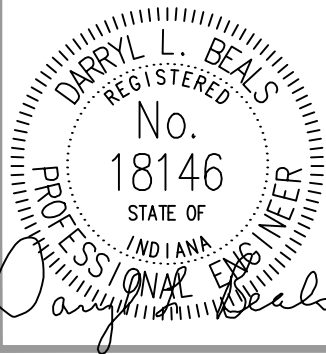


PLAN NOTES: 

(15) MOTORIZED RELIEF AIR DAMPER SAME SIZE OF FAN OUTLET (23x23).

COPYRIGHT SCHOLER CORPORATION 2011

CERTIFIED BY:



WEST LAFAYETTE CAMPUS

LYNN HALL ROOM 1214 AND ROOM 1222 CLASSROOM LABORATORY RENOVATION - 2012

PURDUE UNIVERSITY
WEST LAFAYETTE, INDIANA

Scholer Corporation
ARCHITECTURE ENGINEERING INTERIORS

111 Walter Scholer Drive : PO Box 808 : Lafayette, Indiana 47909
Phone 765.474.1478 : Facsimile 765.474.3570 : www.scholer.com

PROJECT ID: 10835

INDEX NO: V-1

COMM. NO: 2011.14

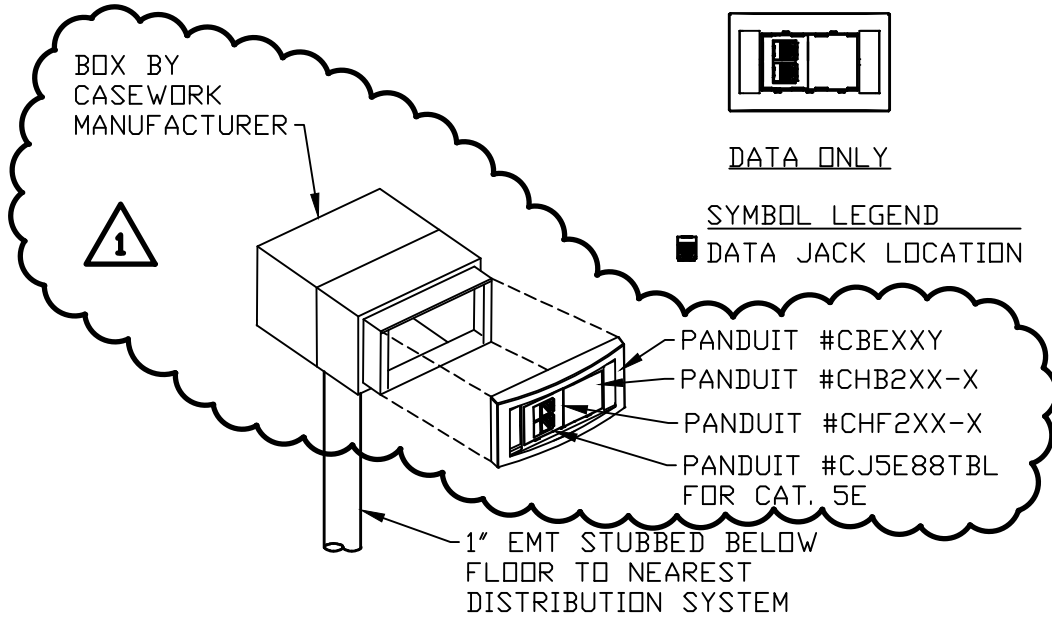
DATE: 12-21-11

PARTIAL PENTHOUSE HVAC
SECTION
ADDENDUM 1 SHEET M-302

R1.1

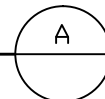
SHEET 1 OF 3

FACE PLATE CONFIGURATION



FLUSH MOUNTED DATA ONLY PIC

SCALE: NONE



COPYRIGHT SCHOLER CORPORATION 2011

CERTIFIED BY:

WEST LAFAYETTE CAMPUS

PROJECT ID: 10835

**LYNN HALL ROOM 1214 AND ROOM 1222
CLASSROOM LABORATORY RENOVATION - 2012**

INDEX NO: V-1

COMM. NO: 2011.14

PURDUE UNIVERSITY
WEST LAFAYETTE, INDIANA

DATE: 12-21-11

TELECOM DETAILS

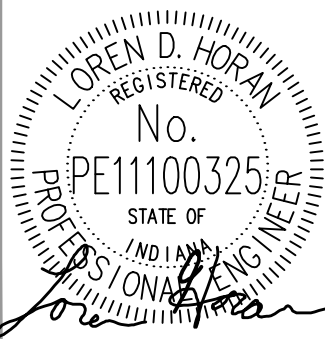
ADDENDUM 1 SHEET T-501

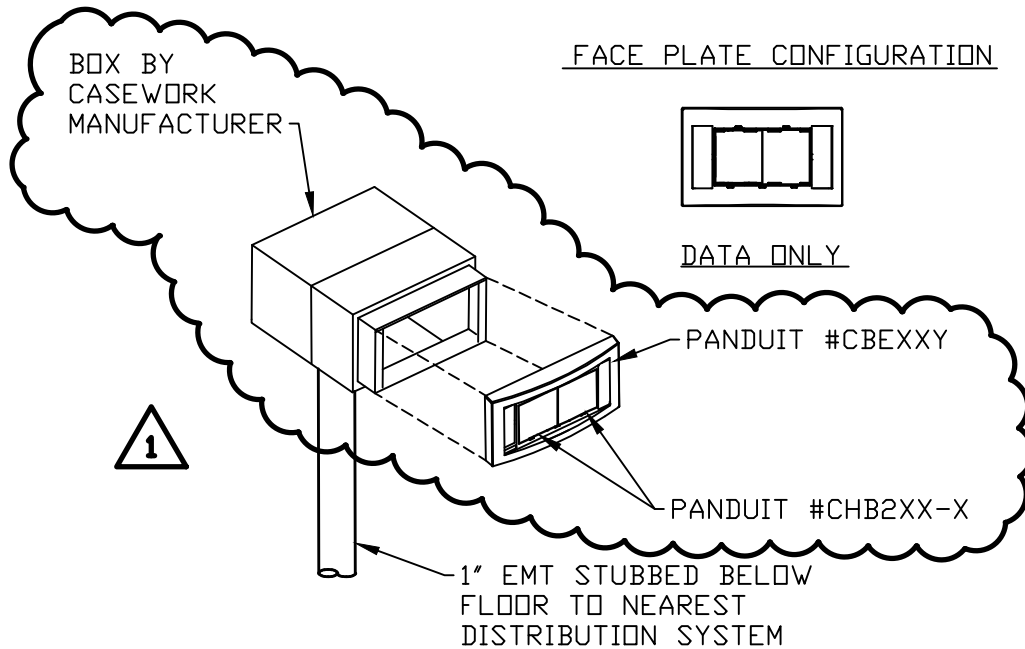
Scholer Corporation
ARCHITECTURE ENGINEERING INTERIORS

111 Walter Scholer Drive : PO Box 808 : Lafayette, Indiana 47909
Phone 765.474.1478 : Facsimile 765.474.3570 : www.scholer.com

R1.2

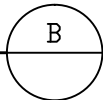
SHEET 2 OF 3





FLUSH MOUNTED FUTURE DATA ONLY PIC

SCALE: NONE

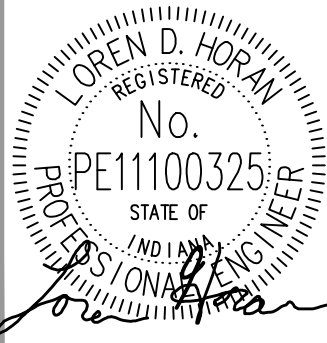


COPYRIGHT SCHOLER CORPORATION 2011

CERTIFIED BY:

WEST LAFAYETTE CAMPUS

PROJECT ID: 10835



LYNN HALL ROOM 1214 AND ROOM 1222 CLASSROOM LABORATORY RENOVATION - 2012

INDEX NO: V-1

PURDUE UNIVERSITY
WEST LAFAYETTE, INDIANA

COMM. NO: 2011.14

DATE: 12-21-11

Scholer Corporation
ARCHITECTURE ENGINEERING INTERIORS

TELECOM DETAILS

ADDENDUM 1 SHEET T-501

111 Walter Scholer Drive : PO Box 808 : Lafayette, Indiana 47909
Phone 765.474.1478 : Facsimile 765.474.3570 : www.scholer.com

R1.3

SHEET 3 OF 3