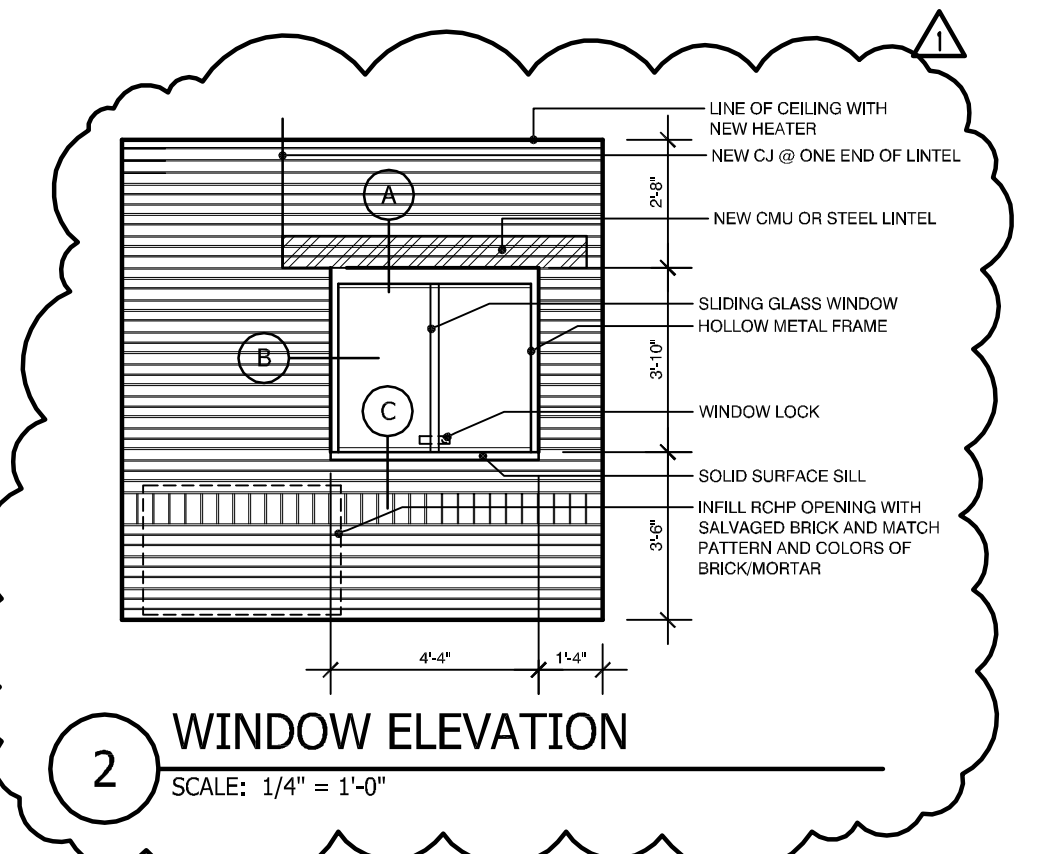
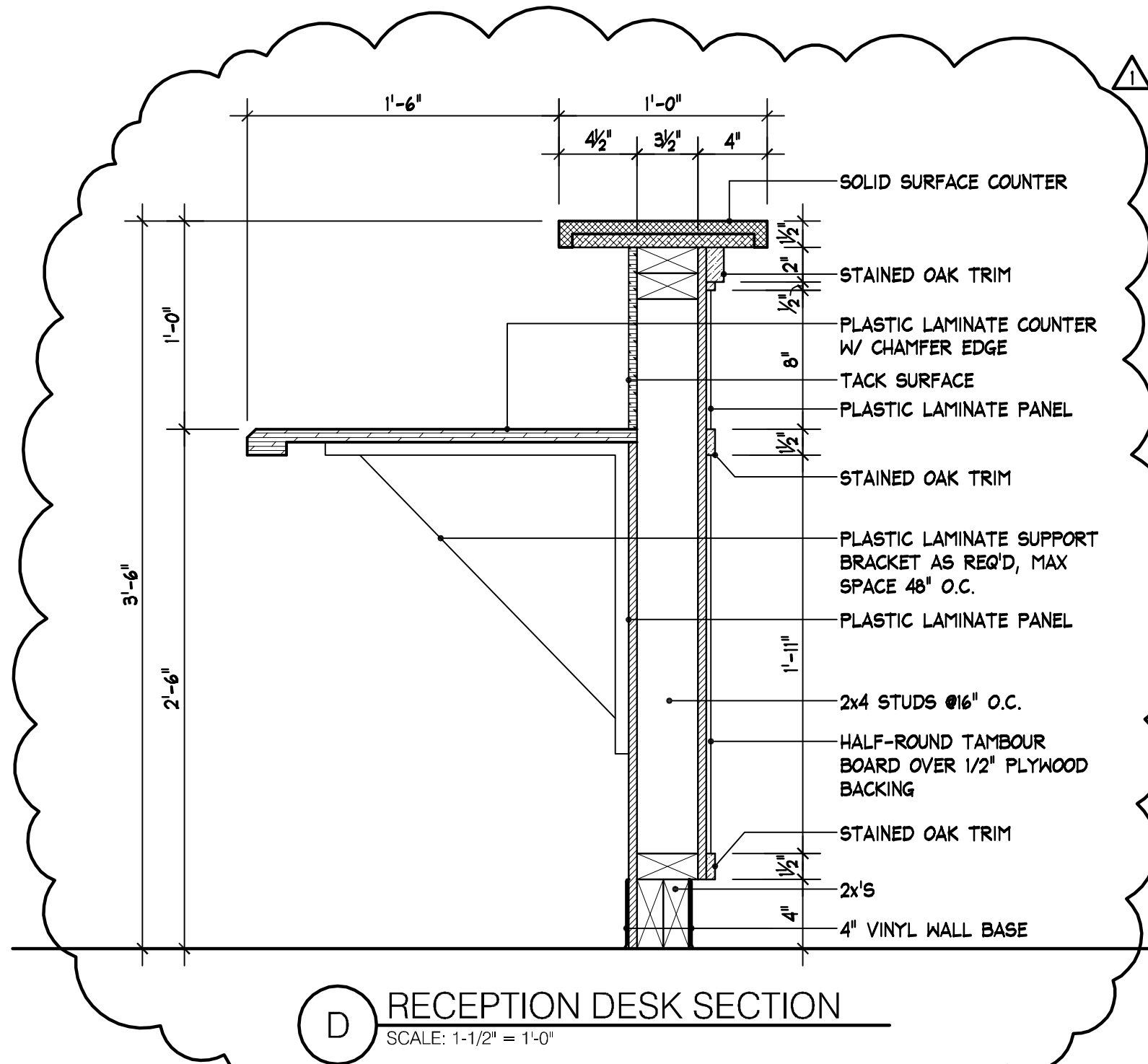
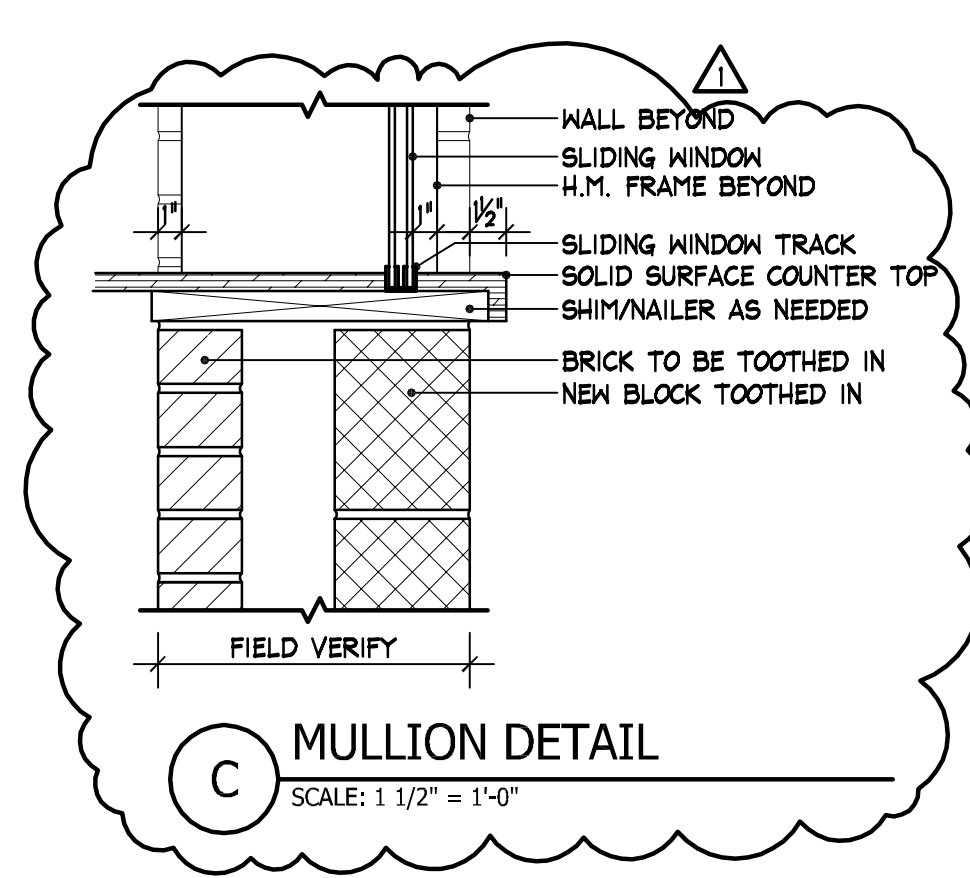
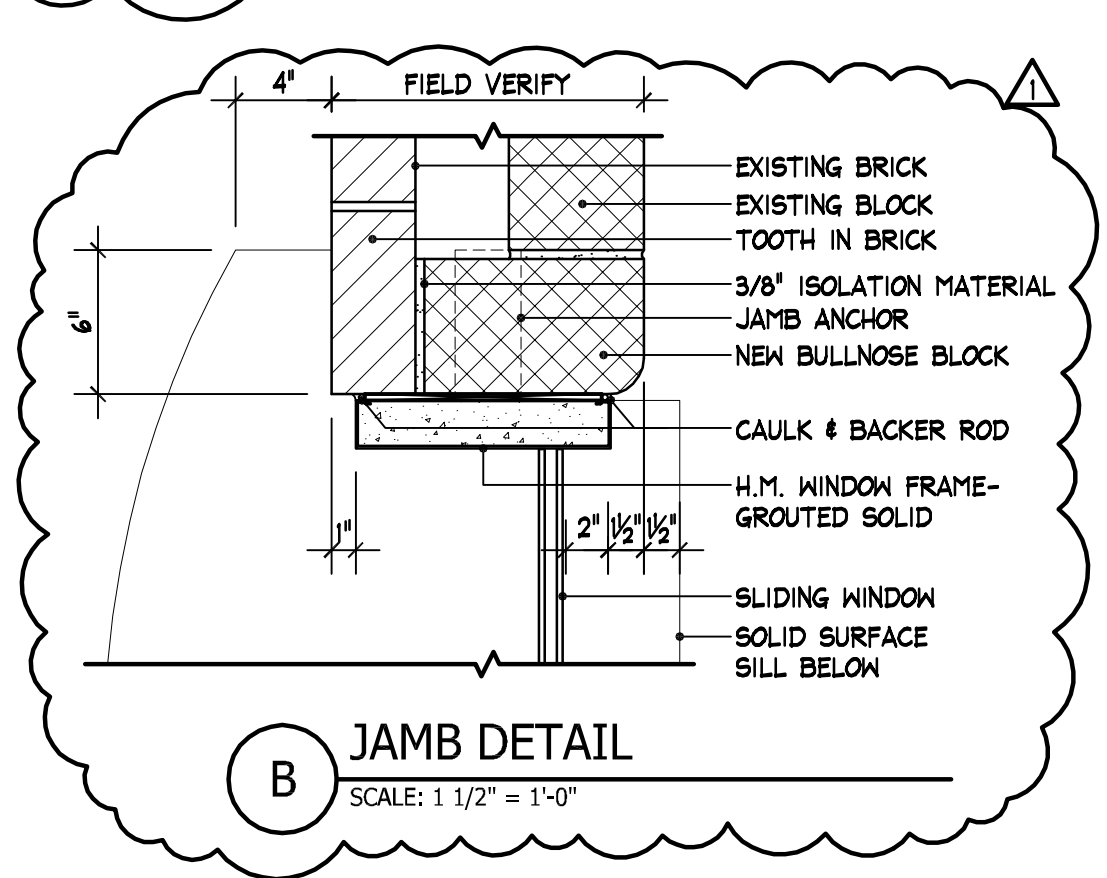
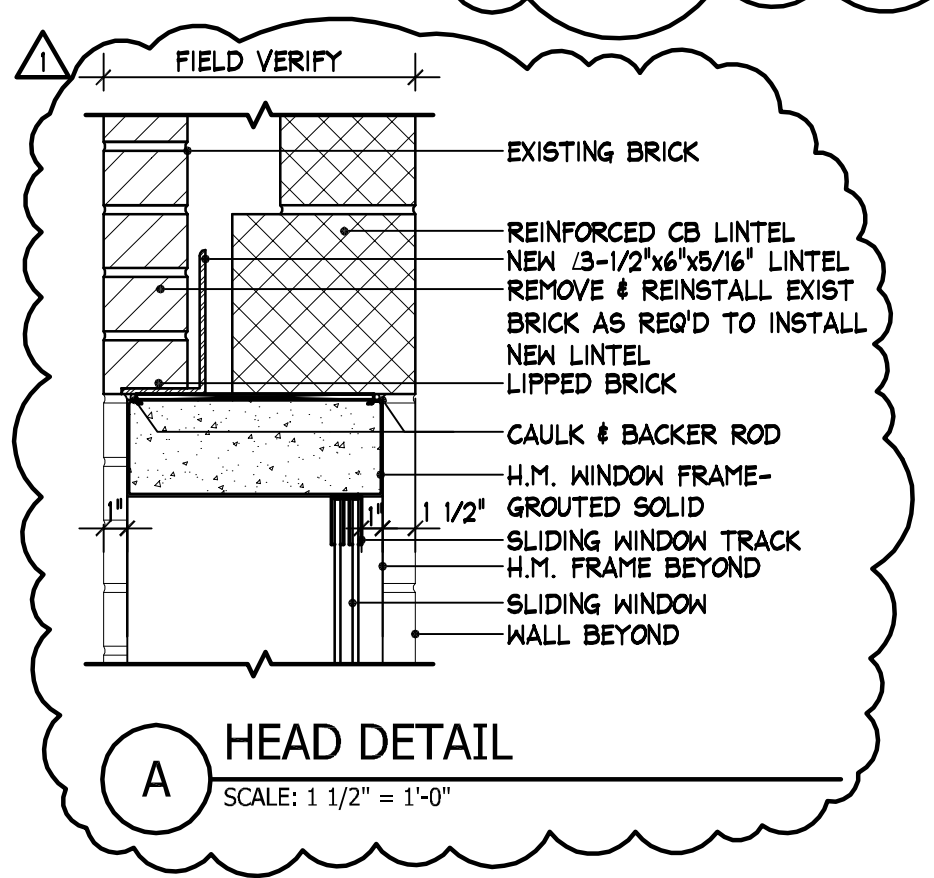


- PLAN NOTES**
- ADJUST GRID AND PADS IN CEILING PER NEW MECHANICAL UNIT. SEE SHEET M100.
 - DEMO EXISTING OFFICE RECEPTION COUNTER AND TEMPORARILY CAP OFF ANY UTILITIES.
 - COORDINATE DEMOLITION AND RELOCATION OF EXISTING WALL WITH DEMOLITION OF EXISTING ELECTRICAL DEVICES - SEE SHEET E100
 - PREP AND FINISH INTERIOR OFFICE WALL TO MATCH EXISTING. SAVE DEMOLISHED BRICK AND BLOCK TO TOOTH IN NEW M.O. USE BULLNOSE CONCRETE BLOCK ON NEW M.O.
 - DEMO EXISTING CARPET AND WALL BASE AS NOTED AND PREP FLOOR TO RECEIVE NEW CARPET TILE AND VINYL WALL BASE.
 - FILL IN ANY HOLES FROM RELOCATED MECHANICAL & ELECTRICAL DEVICES WITH SALVAGED BRICKS FROM OPENING.
 - TOOTH IN BRICK AND BLOCK AROUND NEW OPENING.
 - REPAINT WALLS AS SHOWN, WHERE NEW CARPET AND BASE IS TO BE.
 - EACH WORKSTATION TO HAVE ONE GROMMETT.
 - RECONNECT EXISTING ELECTRICAL FOR DESK AT NEW WORKSTATIONS

- KEYNOTES**
- DEMO EXISTING MASONRY WALL AS NOTED FOR NEW WINDOW OPENING. ALIGN WITH EXISTING JOINTS AND MATCH EXISTING BRICK PATTERN WHEN RELAYING BRICK.
 - NEW HOLLOW METAL WINDOW FRAME WITH SLIDING GLASS WINDOW W/ LOCK-SEE ELEVATION 2/A101
 - NEW TRANSITION STRIP
 - NEW CARPET TILE - LEE'S NO RULES 'BLOX TILE #59357'
 - EXTENT OF NEW PAINT
 - SOLID SURFACE WINDOW SHELF
 - NEW PLASTIC LAMINATE DESK W/ SOLID SURFACE UPPER COUNTER
 - UNDER COUNTER SUPPORT WALL - SEE DETAIL D/A101
 - SOLID SURFACE UPPER COUNTER
 - PLASTIC LAMINATE COUNTER
 - PLASTIC LAMINATE BASE CABINET W/ 1 ADJ SHELF
 - PLASTIC LAMINATE BASE DRAWERS
 - PLASTIC LAMINATE SUPPORT BRACK AS REQ'D
 - PLASTIC LAMINATE PANEL
 - STAINED HALF-ROUND TAMBOR BOARD
 - STAINED OAK WOOD TRIM
 - TACK SURFACE
 - 4" VINYL WALL BASE
 - LOCK



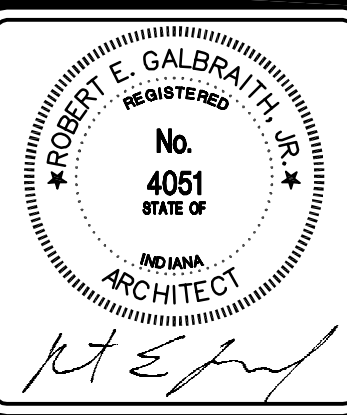
WALL ELEVATION
FOR REFERENCE ONLY



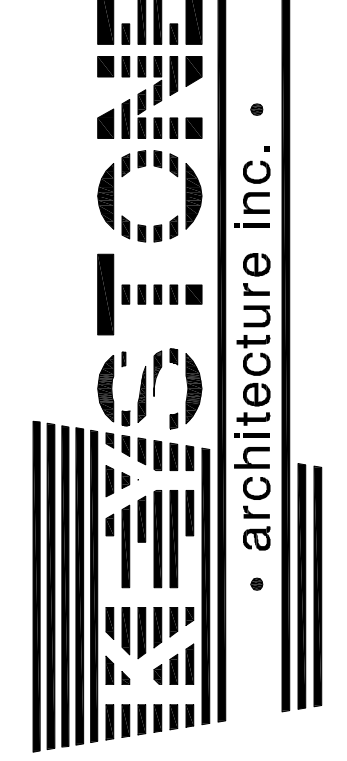
DATE: OCTOBER 6, 2011
DRAWN: JLDDC
CHECKED: REG

REVISIONS
REV: 1.07/21/11

**TSC WEA RIDGE MIDDLE SCHOOL
INTERIOR IMPROVEMENTS PACKAGE**
4410 SOUTH CR 150 EAST
LAFAYETTE, INDIANA

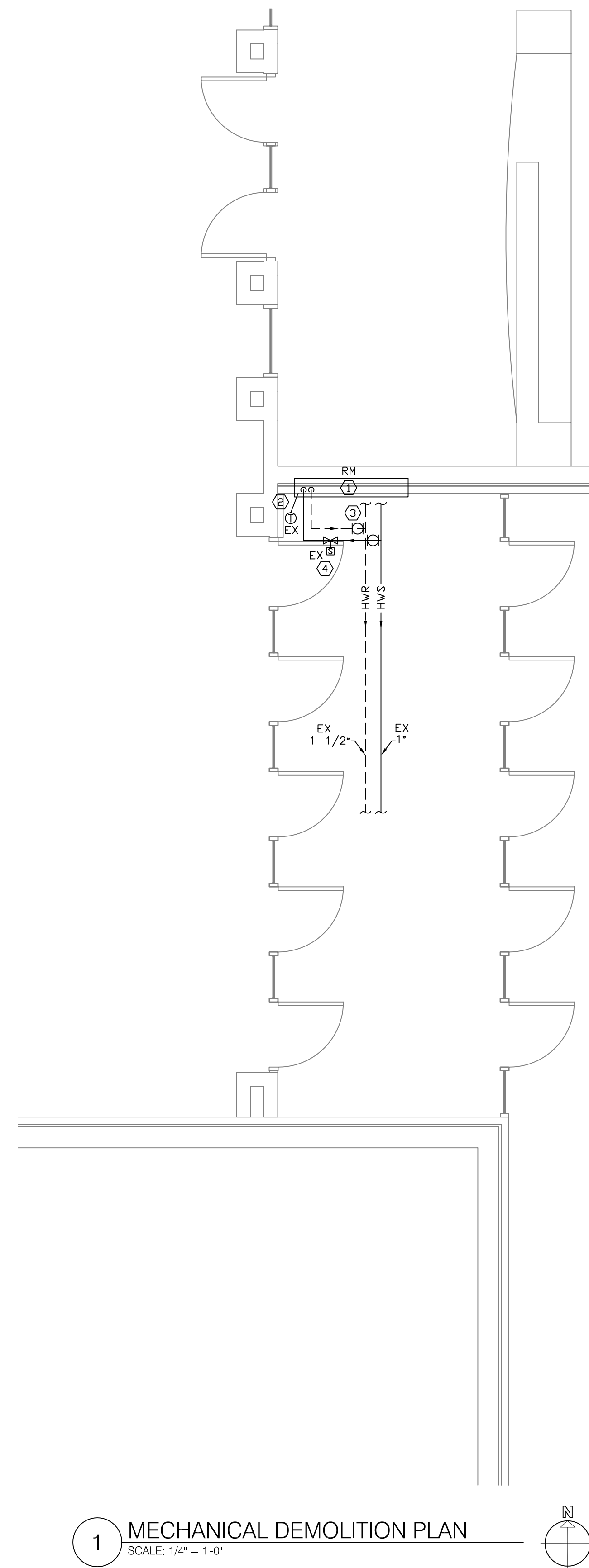


COURTHOUSE SQUARE
322 MAIN STREET
LAFAYETTE, INDIANA 47901
PHONE: 765-4257400
FAX: 765-4257444



11014.02
JOB NUMBER

A101
SHEET NUMBER



1 MECHANICAL DEMOLITION PLAN
SCALE: 1/4" = 1'-0"

ABBREVIATIONS

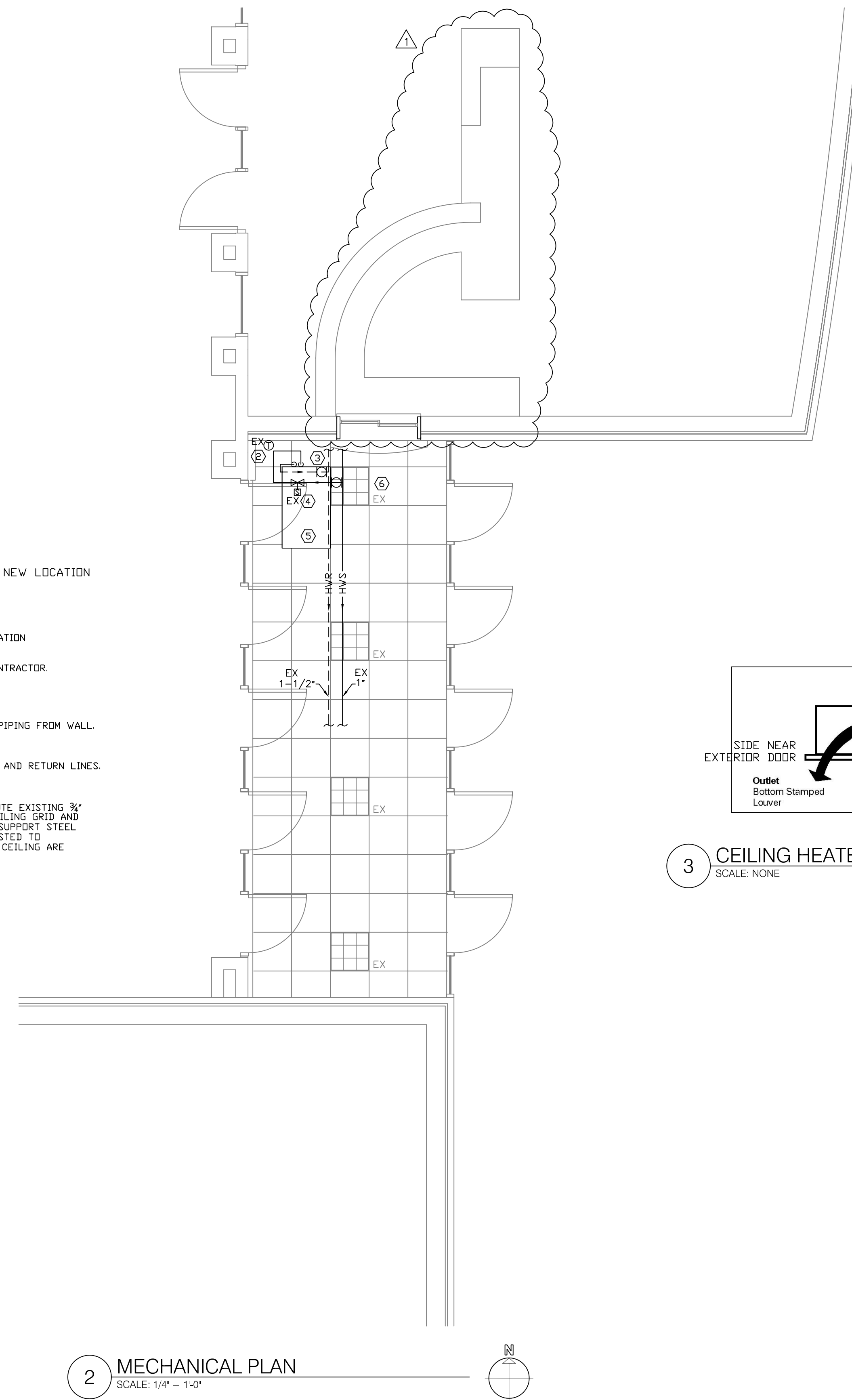
- RM REMOVE
- RR REMOVE AND REINSTALL
- EX EXISTING TO REMAIN
- EXR EXISTING, REMOVED AND REINSTALLED AT NEW LOCATION

GENERAL NOTES

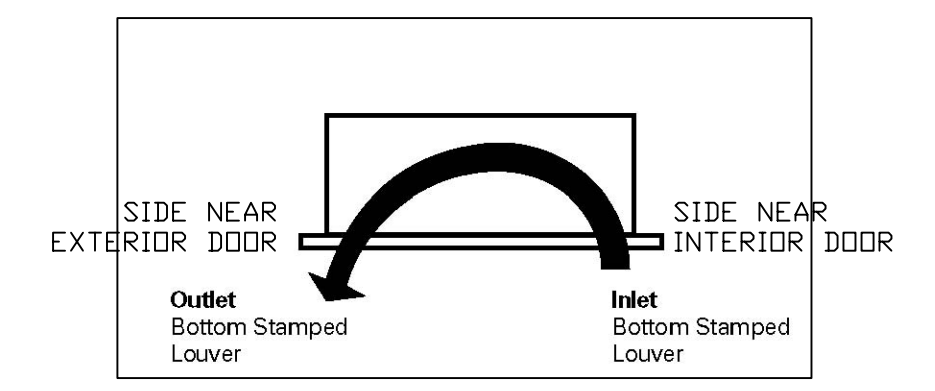
1. SEE DIVISION 22 SPECIFICATIONS FOR PIPE AND INSULATION REQUIREMENTS.
2. ALL TEMPERATURE CONTROL WIRING BY ELECTRICAL CONTRACTOR.

KEYED NOTES


- 1 REMOVE EXISTING CABINET HEATER. REMOVE HYDRONIC PIPING FROM WALL.
- 2 EXISTING THERMOSTAT.
- 3 EXISTING MANUAL SHUTOFF VALVES IN BRANCH SUPPLY AND RETURN LINES.
- 4 EXISTING SOLENOID-OPERATED CONTROL VALVE.
- 5 PROVIDE NEW CEILING HEATER, TRANE FFEB060. RE-ROUTE EXISTING 3/4" BRANCH HYDRONIC PIPING TO UNIT. MODIFY EXISTING CEILING GRID AND CEILING TILES AS NECESSARY. PROVIDE INTERMEDIATE SUPPORT STEEL ABOVE CEILING AS NECESSARY. LOCATION MAY BE ADJUSTED TO ACCOMMODATE EXISTING CONDITIONS. CLEARANCES ABOVE CEILING ARE ADEQUATE AT THE LOCATION SHOWN.
- 6 EXISTING LIGHT FIXTURE (TYPICAL).



2 MECHANICAL PLAN
SCALE: 1/4" = 1'-0"

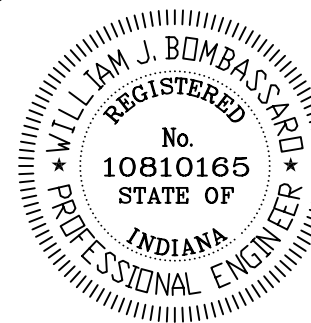


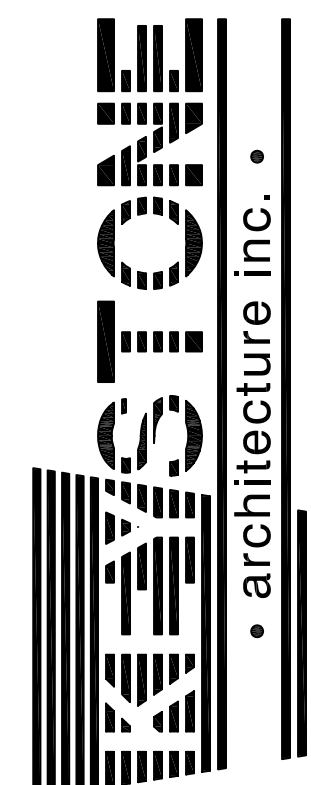
3 CEILING HEATER AIR FLOW
SCALE: NONE


WJB Group Inc
 3880 Baldwin Avenue 765-449-1315
 Lafayette IN 47905 wjbnd71@frontier.com

REVISIONS	DATE	DRAWN	CHECKED
REV-1 10/24/11	OCTOBER 6, 2011	WJB	WJB

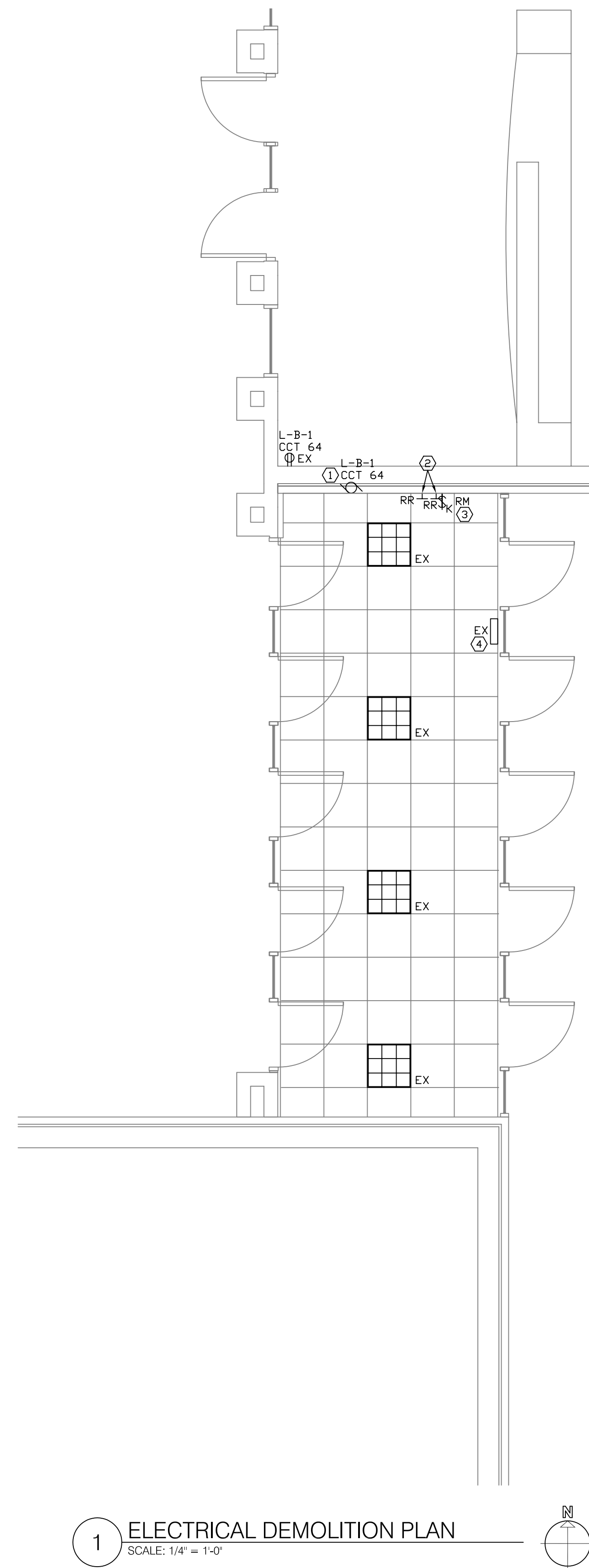
TSC WEA RIDGE MIDDLE SCHOOL
INTERIOR IMPROVEMENTS PACKAGE
 4410 SOUTH CR 150 EAST
 LAFAYETTE, INDIANA


 W.J. Bombassaro


 COURT HOUSE SQUARE
 322 MAIN STREET
 LAFAYETTE, INDIANA 47901
 PHONE: 765-420-7400
 FAX: 765-420-7444

11014.02
JOB NUMBER

M100
SHEET NUMBER



1 ELECTRICAL DEMOLITION PLAN
SCALE: 1/4" = 1'-0"

ABBREVIATIONS

RM REMOVE
 RR REMOVE AND REINSTALL
 EX EXISTING TO REMAIN
 EXR EXISTING, REMOVED AND REINSTALLED AT NEW LOCATION

GENERAL NOTES

1. DISCONNECTION AND EXTENSION OF ALL TEMPERATURE CONTROL WIRING BY ELECTRICAL CONTRACTOR. SEE SHEET M100 FOR SOLENOID-OPERATED CONTROL VALVE.

KEYED NOTES

① DISCONNECT EXISTING CABINET HEATER FOR REMOVAL. BY MECHANICAL CONTRACTOR. EXTEND CIRCUIT TO NEW CEILING HEATER.

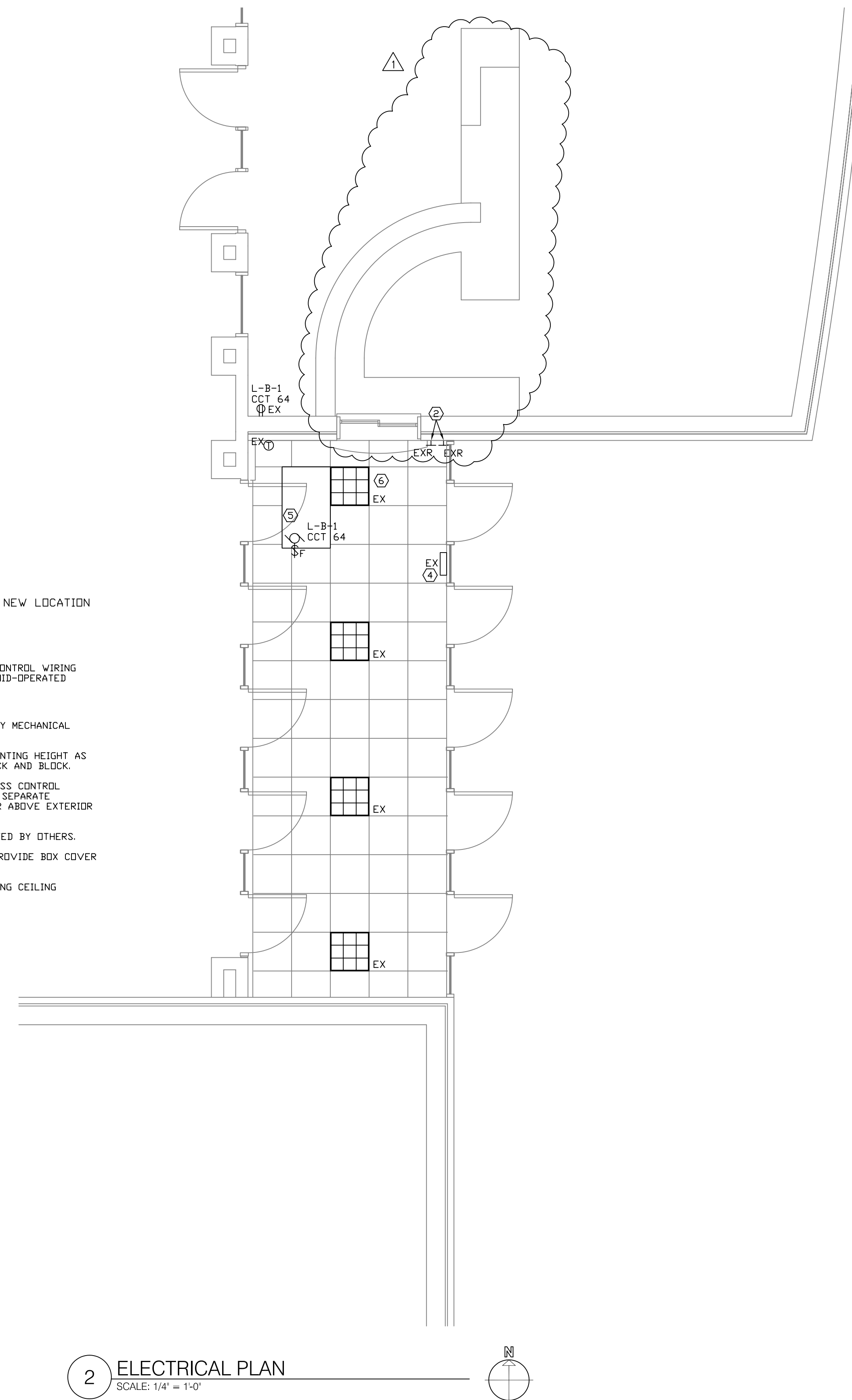
② PUSHPAD FOR DDDR OPERATOR. REINSTALL AT SAME MOUNTING HEIGHT AS EXISTING. ROUTE CONDUIT THROUGH VOID BETWEEN BRICK AND BLOCK.

③ KEY-OPERATED SWITCH FOR EXISTING LOCKNETICS ACCESS CONTROL SYSTEM. SYSTEM WILL BE REPLACED BY OTHERS UNDER SEPARATE CONTRACT. REMOVE SWITCH AND WIRING TO CONTROLLER ABOVE EXTERIOR DOORS.

④ LOCKNETICS CONTROLLER ABOVE CEILING, TO BE REMOVED BY OTHERS.

⑤ CONNECT NEW CEILING HEATER TO EXISTING CIRCUIT. PROVIDE BOX COVER UNIT WITH PLUG FUSE, BUSSMANN SSY.

⑥ PROVIDE TEMPORARY SUPPORT FOR LIGHT FIXTURE DURING CEILING MODIFICATIONS.

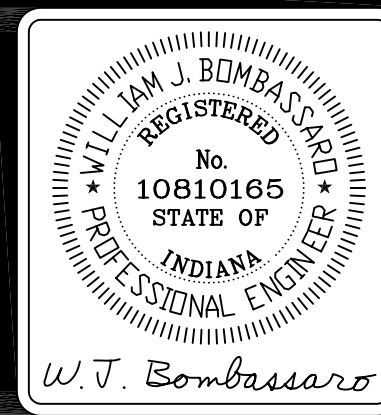


2 ELECTRICAL PLAN
SCALE: 1/4" = 1'-0"

WJB Group Inc
 3880 Baldwin Avenue 765-449-1315
 Lafayette IN 47905 wjbnd71@frontier.com

REVISIONS	DATE	DRAWN	CHECKED
REV-1 10/24/11	OCTOBER 6, 2011	WJB	WJB

**TSC WEA RIDGE MIDDLE SCHOOL
 INTERIOR IMPROVEMENTS PACKAGE**
 4410 SOUTH CR 150 EAST
 LAFAYETTE, INDIANA



KEYSTONE
 architecture inc.

COURTHOUSE SQUARE
 322 MAIN STREET
 LAFAYETTE, INDIANA 47901
 PHONE: 765-420-7400
 FAX: 765-420-7444

11014.02
JOB NUMBER

E100
SHEET NUMBER