



*Prepared By:
Moody•Nolan, Inc.
BSA LifeStructures
Fink Roberts and Petrie, Inc.
Kinzelman Kline Gossman
CDM Lighting Design Group, LLC*

*Construction Manager:
Turner Construction Company*

*Student Fitness and Wellness Center
Renovation and Addition*

BID DATE: November 10, 2011 @ 3:00 PM EST ADDENDUM DATE: October 20, 2011

ADDENDUM No. 1

TO THE PLANS AND SPECIFICATIONS FOR:

*Purdue University
1252 Third Street
West Lafayette, IN 47907-2079*

Restoration Site Contractor, Bid Package 04/32 - 2011

THIS ADDENDUM MUST BE RECEIPTED FOR ON PAGE ONE, FORM OF PROPOSAL.

TO ALL BIDDERS:

This Addendum supplements and amends the original plans and specifications and shall be taken into account in preparing proposals and shall become a part of the Contract Documents.

GENERAL REVISIONS

1. Project Manual Cover Page and Enclosures
 - A. All references to the project shall read "Student Fitness and Wellness Center Renovation and Addition, Restoration Site Contractor, Bid Package 04-32A – 2011" as indicated on the Advertisement of Bids.

2. Project Information – Bid Schedule
 - A. Revise Bid Procurement line item DR4-8030 Bid Date to November 10, 2011.
 - B. Revise Bid Procurement line item DR4-8040 BOT Authorization to December 16, 2011.

SPECIFICATION REVISIONS

1. Section 01 01 00.43 – Project Requirements
 - A. Paragraph 1.05B: Change to read:

“B. All questions about the Contract Documents shall be directed to the Architect of Record prior to bid. The last day for questions is November 4, 2011 at 12:00 p.m.EDT.”
2. Section 01 21 13.4 – Allowances
 - A. Paragraph 1.07A.1: Add the following:

“c. \$50,000 for ballast system and installation of previously procured sports netting.”
3. Section 11 66 55.4 – Sports Netting
 - A. Replace with revised copy attached hereto.

DRAWING REVISIONS

Landscape Items

1. Sheet L101 – SITE LAYOUT & MATERIALS
 - A. Revise as indicated on Sketch No. L-SK-01.

Architectural Items

1. Sheet A101t – PLAN 1 – FIRST FLOOR DEMOLITION
 - A. Revise Demolition Note 14 to read:

“Remove all three (3) existing divider curtains located south of column line “E” in their entirety.”
2. Sheet A101t – Section 4 – NETTING PROFILE SECTION
 - A. Revise dimensions as noted on Sketch No. A-SK-01.

ATTACHMENTS

Specification Items

Section 11 66 55 – SPORTS NETTING

Landscape Items

Sketch No. L-SK-01

Architectural Items

Sketch No. A-SK-01

END OF ADDENDUM No. 1

SECTION 11 66 55.4

SPORTS NETTING

PART 1 GENERAL

1.01 SUMMARY

- A. Section includes fixed athletic netting systems, including rigging, netting, and accessories.

1.02 SUBMITTALS

- A. General: Section 01 33 00.4.
- B. Manufacturer's product data describing each system component.
- C. Shop drawings demonstrating system fabrication techniques and details of connections to building structural components.
 - 1. Document sizes, rating, and weights of all components, equipment, supports, and linkages. All assembly drawings shall have a product listing for all materials, components, equipment, and special equipment furnished.
 - 2. Show all details necessary for fabrication of special components, linkages, and supports.
 - 3. Provide layout for the final installation configuration, including, but not limited to, net openings, dimensions, ballast connections, and profile section.
 - 4. Miscellaneous details and assembly drawings, include lengths, widths, and sizes of all members, connection details, locations, type and size of bolts, rivets, welds, and other connections.
 - 5. Load reactions and anchor points for pre-engineered metal building verification.

1.04 COORDINATION

- A. Coordinate installation with work of other trades to ensure unimpeded progress of the Work, including final clearance with mechanical and structural.

1.05 QUALITY ASSURANCE

- A. Installer: Minimum 5 years experience installing athletic court netting similar to the type and scope required for this project.

1.06 ALLOWANCE

- A. Netting has been previously procured and stored by Lee Company, Inc. as part of previous phase. Contractor to include allowance per Spec Section 01 21 13.4 for furnish and installation of Performance Sports Netting system by Lee Company, Inc. The indicated allowance is inclusive of all work indicated by the contract documents and/or specifications.

PART 2 PRODUCTS

2.01 MANUFACTURERS

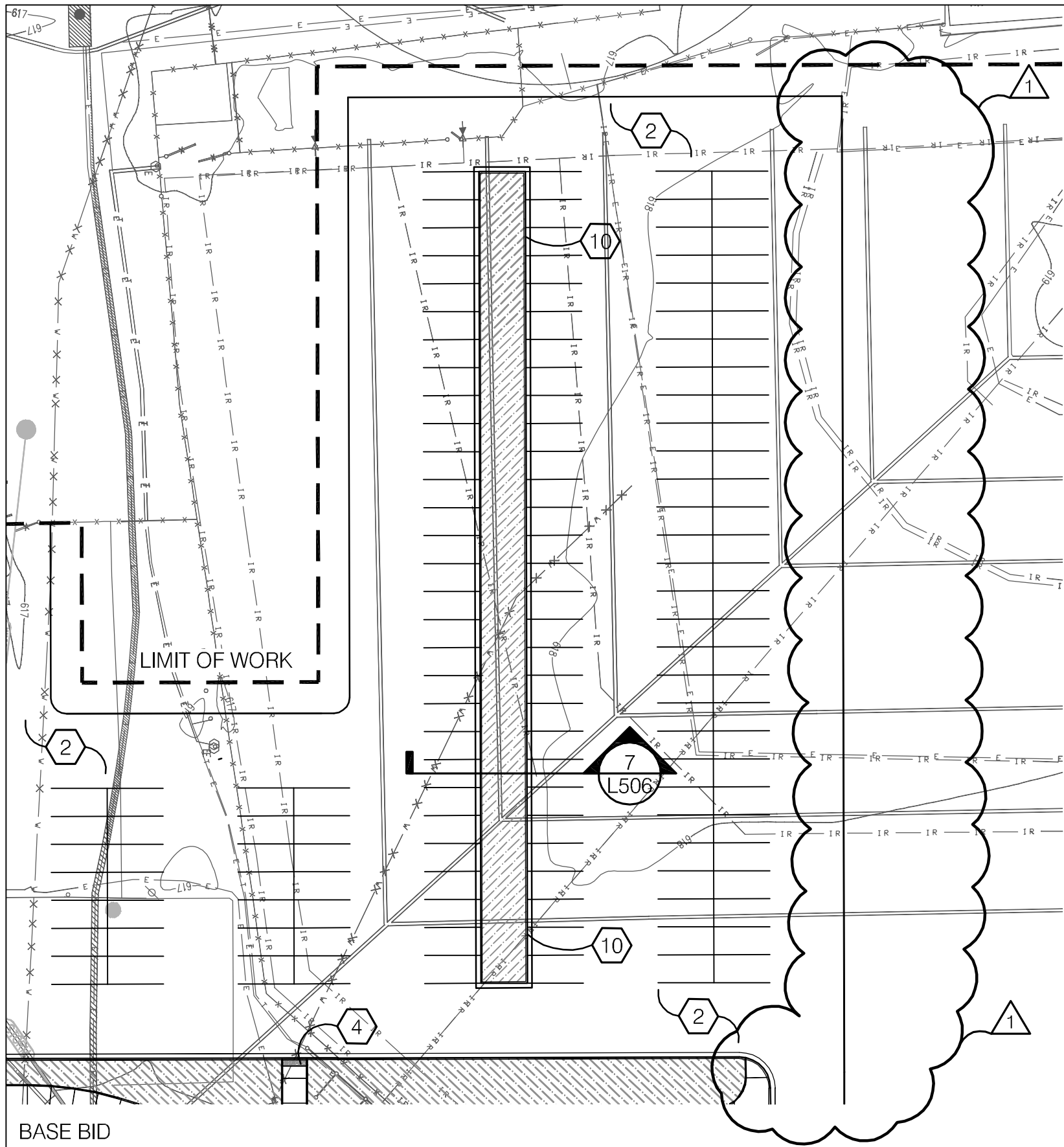
- A. Court Netting Manufacturers
 - 1. PERFORMANCE SPORTS SYSTEMS
- 2.02 ATHLETIC NETTING
- A. Gymnasium Curtains: PERFORMANCE SPORTS SYSTEMS
 - 1. Netting: Cable suspended, fixed type. 1-1/2" mesh, black.
 - a. Limits and Profile: As indicated on the drawings.
 - 2. Utilize and tie into existing horizontal cable support system that was installed in a previous phase. Existing horizontal cable is already attached to the existing structural members. Provide additional supports if needed.
 - 3. Cable: 1/4-inch diameter galvanized aircraft cable, 7,000 pounds breaking strength, mounted horizontally from structural members of building.
 - 4. Ends of Cable: Equipped with turnbuckles for tensioning cables.
 - 5. Provide all fittings, turnbuckles, eyebolts, clamps, threaded rods and other miscellaneous fasteners and hardware to permanently secure netting to structure. Provide all items with galvanized finish, unless noted otherwise.
 - 6. Ballast/weight system to secure nets during initial installation.
 - 7. Provide closable athletic netting openings as indicated in the drawings.
 - 8. Install 2" wide "red" color boundary at defined closable athletic netting egress openings where indicated in the drawings.

PART 3 EXECUTION

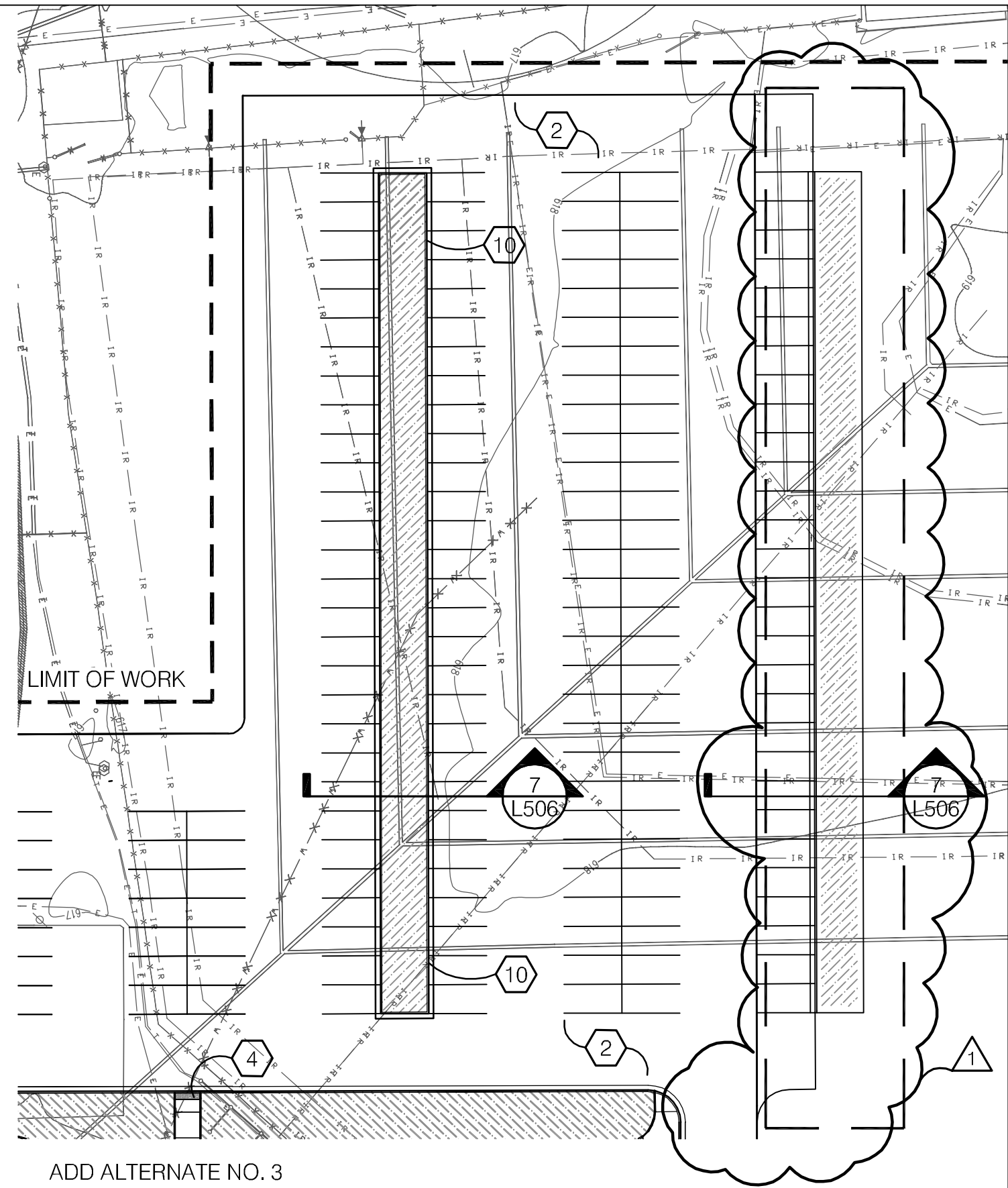
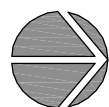
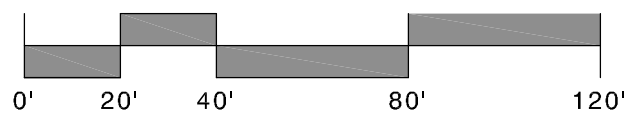
3.01 INSTALLATION

- A. Install the athletic netting components and systems in strict accordance with manufacturer's installation instructions and recommendations.
- B. Attachment of netting to floor surfacing to be in strict accordance with manufacturer's installation instructions and recommendations.
- C. Netting is not to be installed within 7'-0" minimum from center of existing suspended radiant heating units.

END OF SECTION



BASE BID

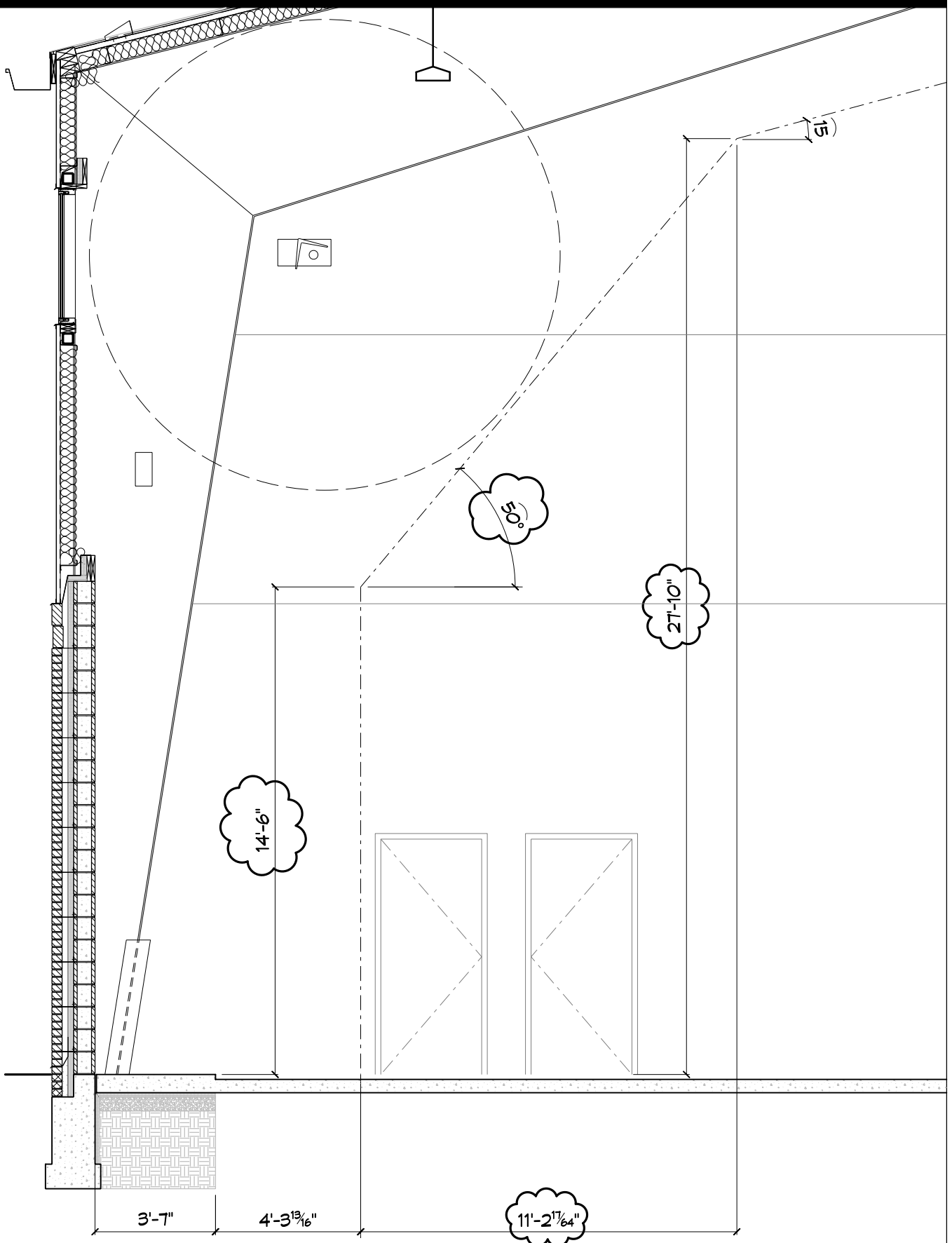


ADD ALTERNATE NO. 3

MOODY·NOLAN, INC.
 architecture civil engineering interior architecture
 200 South Meridian Street Suite 440 Indianapolis, IN 46225
 Phone: (317) 619-4082 Fax: (317) 619-4083
 www.moodynolan.com

Student Fitness & Wellness Center
 Renovation and Addition
 Purdue University
 355 North Martin Jischke Drive
 West Lafayette, IN 47907-2030

ISSUED WITH DR4 Addendum 01	SHEET REVISED L101
DESIGN RELEASE #: 4	SKETCH NUMBER L-SK-01
PROJ# MNI# 08226	DRAWN BY TMS
	DATE 10/19/2011



MOODY·NOLAN, INC.

architecture | civil engineering | interior architecture

200 South Meridian St
Suite 440
Indianapolis, IN 46225

Phone: (317) 916-4082
Fax: (317) 916-4083
www.moodynolan.com

Student Fitness & Wellness Center
Purdue University
355 North Martin Jischke Drive
West Lafayette, IN 47907-2030
Purdue Project ID#11247

ISSUED WITH
ADDENDUM 1

SHEET REVISED
4/A101t

DESIGN
REL #:

4

SKETCH NUMBER

A-SK-01

PROJ #
08226

DRAWN BY
DP

DATE
10/19/11